



Waste solutions and SERVO-DRIVE uno

For LEGRABOX and MERIVOBX

A woman with long brown hair, wearing a purple long-sleeved shirt and grey jeans, is standing in a modern kitchen. She is holding a small bowl of orange slices in her hands. The kitchen features a dark grey countertop with a sink and a modern faucet. On the counter, there is a fruit basket with various fruits, a pineapple, and a glass bowl. The background is a light-colored brick wall. The floor is made of light wood. The woman is standing next to a dark grey cabinet with a white bin drawer that is open. She is using her knee to open the drawer. The text "Hands full? We've got it covered.." is overlaid on the left side of the image.

Hands full? We've got it covered..

When you're juggling groceries, cooking, or cleaning, the last thing you need is to struggle with the bin drawer. That's where SERVO-DRIVE uno comes in. A quick nudge with your knee or hip is all it takes to open it—no hands needed. It's the perfect hands-free solution for a cleaner, more efficient kitchen.



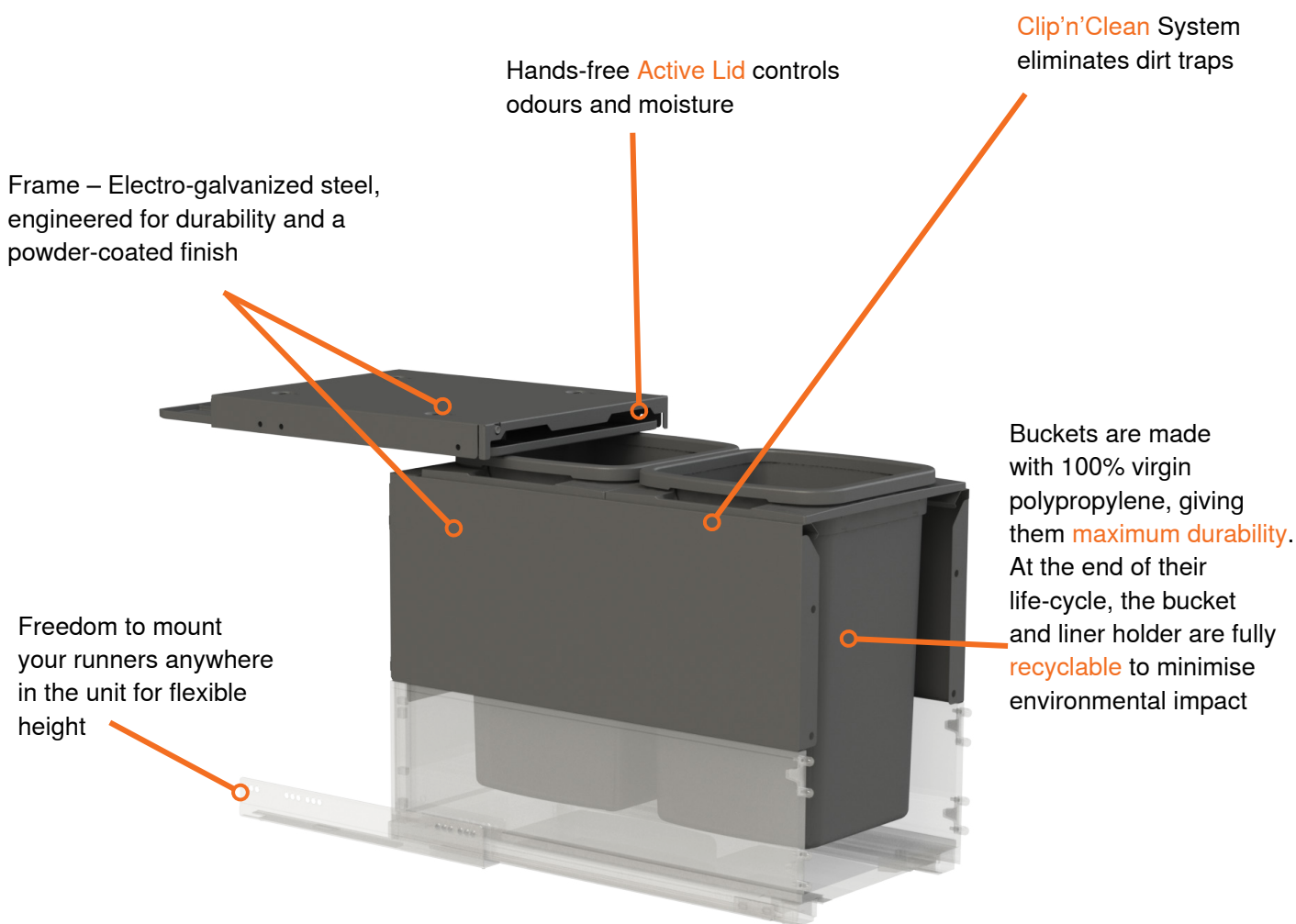
Contents

- 4** Concelo entro features
- 6** Concelo entro for LEGRABOX and SERVO-DRIVE uno
- 8** Concelo entro for MERIVOBX and SERVO DRIVE uno
- 10** Concelo entro accessories

Designed to integrate seamlessly into Blum's LEGRABOX and MERIVOBX drawers, CONCELO® ENTRO™ offers effortless cleanliness, controlled odours and moisture, and a precise, fluid closing motion. Colour matched to silk white and orion grey, it blends beautifully with your kitchen design while maintaining consistent drawer

performance and streamlined assembly. With the ability to position the system anywhere within the unit, Concelo entro is the perfect pairing of Blum's world-class drawer technology and Concelo's state-of-the-art waste management.

Features of Concelo entro



Compatible with TIP-ON BLUMOTION and SERVO-DRIVE to provide a true hands-free waste system. Concelo entro bin is perfectly flush size for seamless integration with Blum drawers.

Designed to suit 550 mm drawers to allow easy access to rear bucket.

Clip'n'Clean

System

Keep your bin looking and smelling fresh with effortless removal and cleaning. The unique Clip'n'Clean System creates an easy cleaning process in just 3 simple steps:

- 1 Effortless removal
- 2 Wash in warm soapy water
- 3 Reinstallation within moments

Scan to watch
Active Lid and Easy
Clean Technology



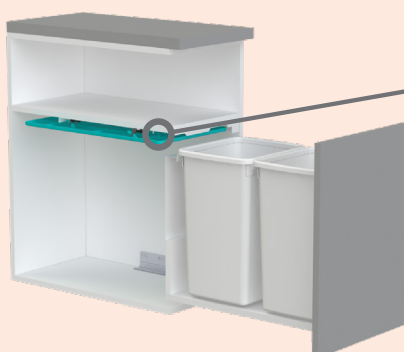
SCAN ME



Intelligent odour control with Active Lid technology

Tackle odours and moisture without lifting a finger

- Hidden Active Lid – Drops down over the buckets when the drawer closes, trapping in odours and moisture – no need to remove a lid from your bin.
- Hands-Free Design – The lid moves in harmony with the opening and closing action of the drawer, allowing for a hands-free waste disposal experience.
- Easy Maintenance – A clever lid tool to allow quick removal for cleaning and re-installation.



Active Lid drops down over the buckets when the bin is closed

10 YEAR
WARRANTY

For Concelo
entro System



LEGRABOX

LEGRABOX offers a sleek, modern drawer system designed by Blum for a smooth, silent performance. Perfect for any living space, it combines elegant aesthetics with advanced functionality and compatibility with Blum's motion technologies.

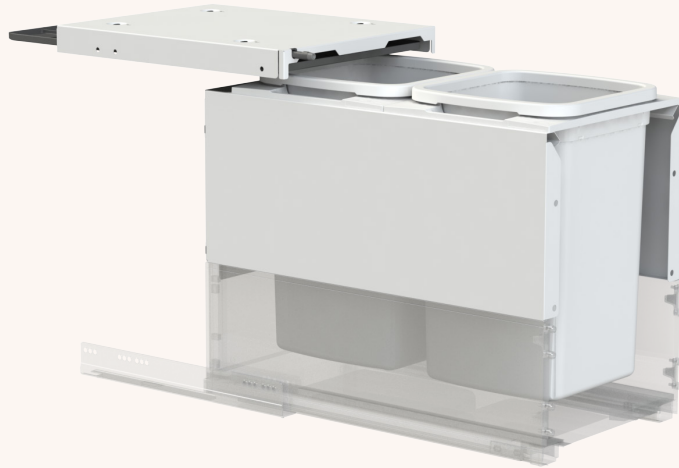
Easy Installation

The Concelo entro bin system is supplied with drilling templates and uses system 32 drilling for complete compatibility with Blum drawers.

Watch the installation animation to see the simple bin assembly



Concelo entro for LEGRABOX



For C height 550 mm drawers in pure design sides only
Designed for standard width cabinets using 16 mm board

Pictured: 092 234 08

Ordering information for Concelo entro for LEGRABOX

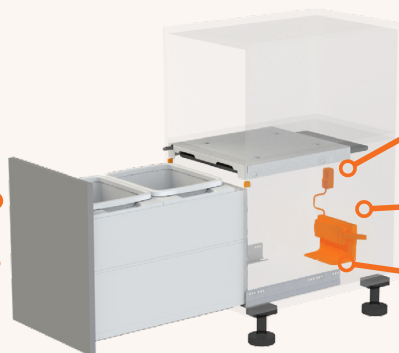
Order bins + drawer + optional SERVO-DRIVE uno

Cabinet width	Bucket configuration	Dimensions (WxHxD) mm	ORION GREY	SILK WHITE
350 mm	2 x 13 L	318 x 385 x 555	080 784 02	067 665 20
	2 x 16 L	318 x 481 x 555	052 523 00	092 234 08
400 mm	2 x 15 L	368 x 385 x 555	034 004 75	034 191 28
	2 x 20 L	368 x 481 x 555	061 579 23	065 576 02
450 mm	2 x 15 L	418 x 385 x 555	043 117 07	045 873 59
	2 x 20 L	418 x 481 x 555	058 948 16	056 107 91

SERVO-DRIVE uno for use with Concelo entro for LEGRABOX

Suits fronts with handles or handle-less

Push-to-open and soft-close. Open when your hands are full; press with an elbow, hip or knee



Electronic opening support system.
Regular NZ power point required

SERVO-DRIVE uno
requires a cabinet
maker to install.

SERVO-DRIVE uno requires
inner cabinet depth of
nominal length + 35 mm

Ordering information for SERVO-DRIVE uno

SERVO-DRIVE uno

SERVO-DRIVE uno for waste solutions

056 346 66



MERIVOBX

MERIVOBX is Blum's versatile drawer system designed for modern living and streamlined manufacturing. With a clean, minimalist look and consistent performance, it offers smooth motion, high stability, and flexible design options—all built on a single platform for simplicity and efficiency.

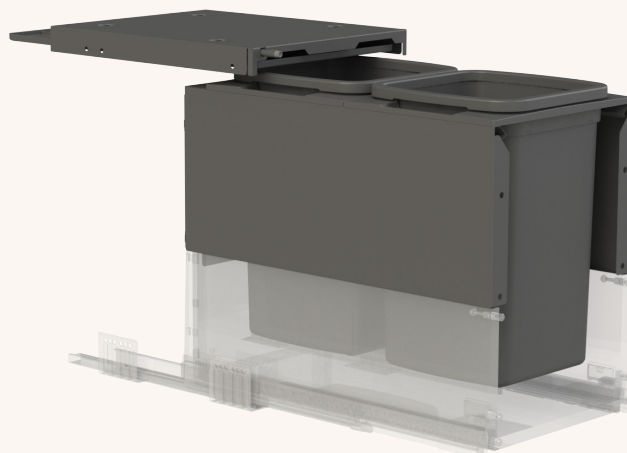
Easy Installation

The Concelo entro bin system is supplied with drilling templates and uses system 32 drilling for complete compatibility with Blum drawers.

Watch the installation animation to see the simple bin assembly



Concelo entro for MERIVOBX



For E height 550 mm drawers in BOXCAP or pure design sides only
Designed for standard width cabinets using 16mm board

Pictured: 082 579 48

Ordering information for Concelo entro for MERIVOBX

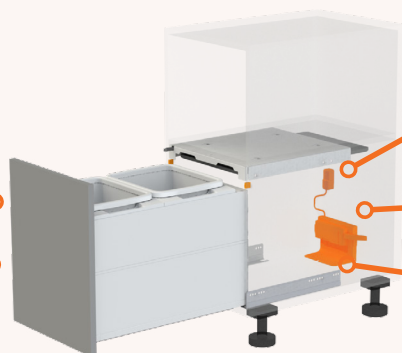
Order bins + drawer + optional SERVO-DRIVE uno

Cabinet width	Bucket configuration	Dimensions (WxHxD) mm	ORION GREY	SILK WHITE
350 mm	2 x 13 L	318 x 369 x 555	031 468 23	026 757 72
	2 x 16 L	318 x 497 x 555	082 579 48	057 393 84
400 mm	2 x 15 L	368 x 369 x 555	043 878 65	050 894 90
	2 x 20 L	368 x 497 x 555	011 655 13	016 819 41
450 mm	2 x 15 L	418 x 369 x 555	085 613 99	013 770 25
	2 x 20 L	418 x 497 x 555	040 660 78	072 733 32

SERVO-DRIVE uno for use with Concelo entro for MERIVOBX

Suits fronts with handles or handle-less

Push-to-open and soft-close. Open when your hands are full; press with an elbow, hip or knee



Electronic opening support system.
Regular NZ power point required

SERVO-DRIVE uno
requires a cabinet
maker to install.

SERVO-DRIVE uno requires
inner cabinet depth of
nominal length + 35 mm

Ordering information for SERVO-DRIVE uno

SERVO-DRIVE uno

SERVO-DRIVE uno for waste solutions

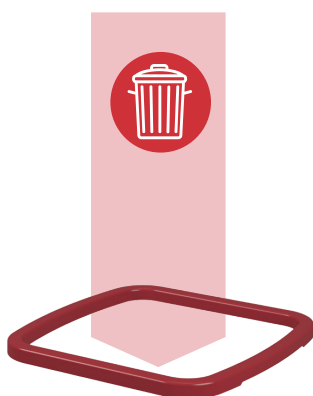
056 346 66

Colour-coded convenience for smarter recycling

Simplify waste sorting with Concelo entro. Create a seamless, sustainable waste management system with colour-coded liner holders.

- Easily distinguish waste and recycling streams with vibrant colour-coded liner holders.
- Compatible with Concelo entro buckets – 13 L, 15 L, 16 L and 20 L.
- A smart, separate accessory – Available for individual purchase to enhance your waste system.

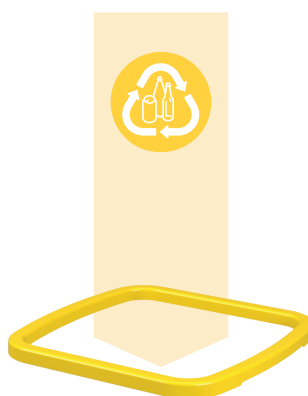
Red
landfill



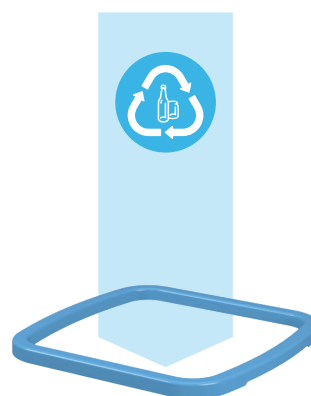
Green
food scraps



Yellow
recyclables



Blue
glass



Concelo entro accessories



13 L

15 L

16 L

20 L

Buckets

Size	WHITE	GREY	Dimensions (WxHxD) mm
13 L	078 916 40	011 959 50	246 x 290 x 246
15 L	052 345 71	078 677 22	279 x 290 x 243
16 L	041 793 21	089 842 53	246 x 375 x 246
20 L	051 512 80	082 441 18	279 x 395 x 243

Liner holders

Size	WHITE	GREY	RED	GREEN	YELLOW	BLUE	Dimensions (WxHxD) mm
13 L & 16 L	085 163 71	057 220 35	020 224 46	057 799 46	047 403 70	089 523 58	250 x 15 x 248
15 L & 20 L	031 789 49	064 883 26	033 481 94	089 412 05	020 258 18	053 896 77	283 x 15 x 247

Concelo.
entro

Crafted in New Zealand for superior quality

The Concelo entro system is proudly designed and manufactured in New Zealand by Hideaway Bins, the leader in premium waste management solutions.

With a commitment to precision engineering and durable materials, every component is crafted for long-lasting performance, seamlessly integrating into modern spaces. Partnering with New Zealand's top manufacturers, Hideaway Bins ensures exceptional quality in every detail.

Each bin is expertly assembled in Silverdale, Auckland, undergoing rigorous quality control to guarantee reliability and excellence – because when it's made in New Zealand, by Hideaway Bins, it's made to last.

Manufactured by Kitchen King Ltd

Home of Hideaway Bins
44 Anvil Road, Silverdale, Auckland, 0932
New Zealand
Phone: 09 426 7456
info@hideawaybins.co.nz

Blum New Zealand Ltd
621 Rosebank Road, Avondale
Auckland 1026
New Zealand
Phone: 09 820-5051
E-mail: info.nz@blum.com

Blum New Zealand Ltd
16 Avenger Crescent, Wigram
Christchurch 8042
New Zealand
Phone: 03 379-4984
E-mail: info.nz@blum.com

Julius Blum GmbH
Furniture Fittings Mfg.
6973 Höchst, Austria
Tel.: +43 5578 705-0
E-mail: info@blum.com
www.blum.com

Our sites in Austria, Poland and China are certified to the international standards mentioned below.
Our site in the USA is certified to ISO 9001.
Our site in Brazil is certified to ISO 9001 and ISO 14001.



ISO 9001
Certified Quality
System



ISO 14001
Certified Environmental
System



ISO 50001
Certified Energy
System

