



## Manufacturer tips for TIP-ON BLUMOTION

[www.blum.com](http://www.blum.com)

 **blum**<sup>®</sup>



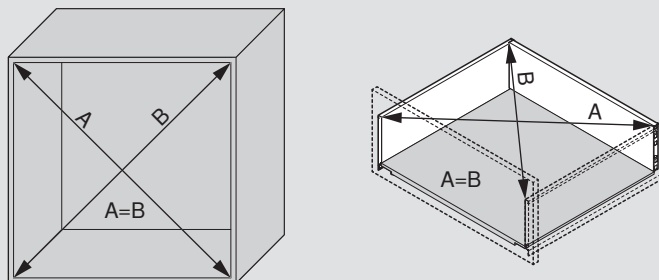
## TIP-ON BLUMOTION



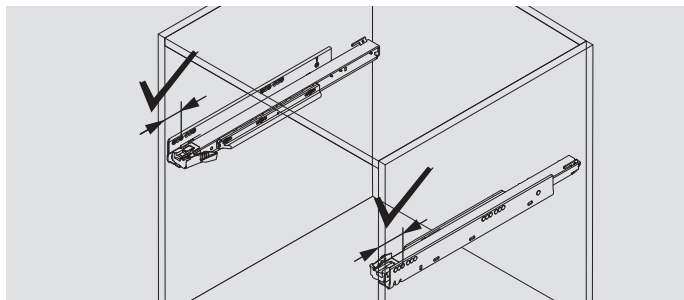
## Manufacturer tips

In order for you as a manufacturer and your customers as future users to enjoy long-term use of pull-outs with TIP-ON BLUMOTION, we ask you to please consider the following points during manufacture, assembly and transportation.

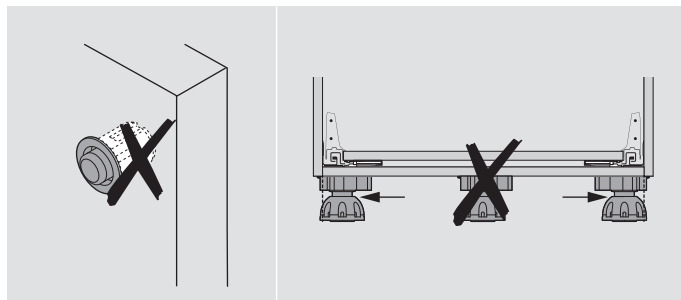
### Furniture construction



To ensure a front gap of at least 2.5 mm, precise manufacturing is required, so it should be ensured that planned measurements and angle accuracy are adhered to.

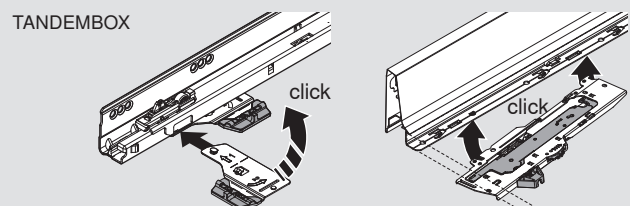
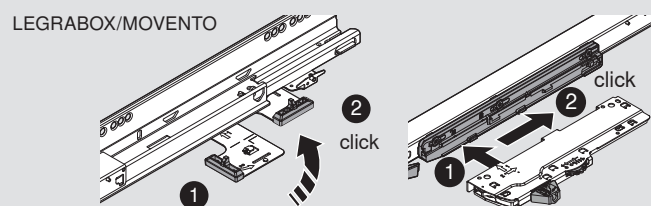


Observe exact depth position of both cabinet profiles.

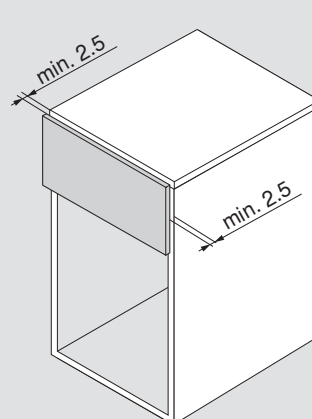


Do not use a bumper, as this restricts the triggering function. The cabinet bottom may not bend upwards, therefore do not use a fifth base leg.

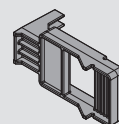
### Manufacture and adjustment of fittings



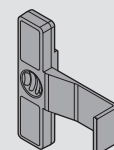
Engage TIP-ON BLUMOTION components until there is an audible clicking sound.



LEGRABOX/MOVENTO



TANDEMBOX

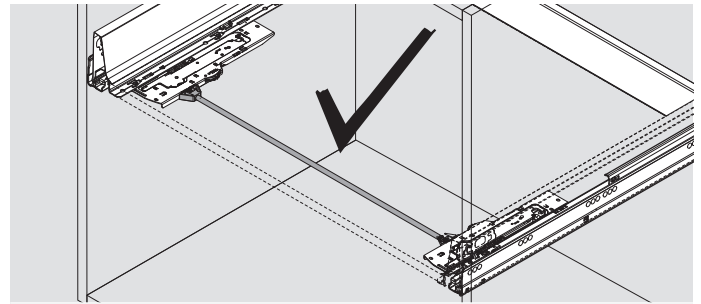


The front gap should be adjusted identically on each side to a minimum of 2.5 mm.



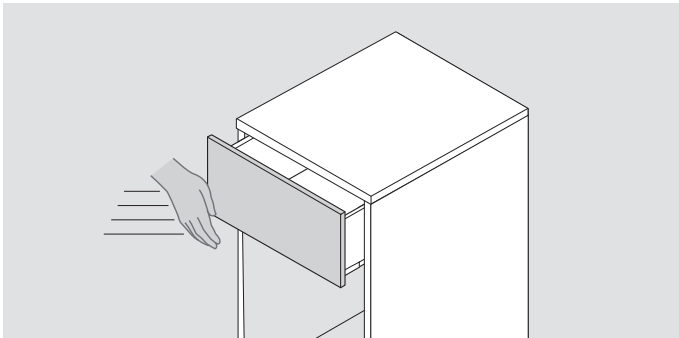


Select the right TIP-ON BLUMOTION unit: the hatched surface of the marking on the underside shows the relevant load configuration (for short nominal lengths S0 and S1, for longer nominal lengths L1, L3 and L5).

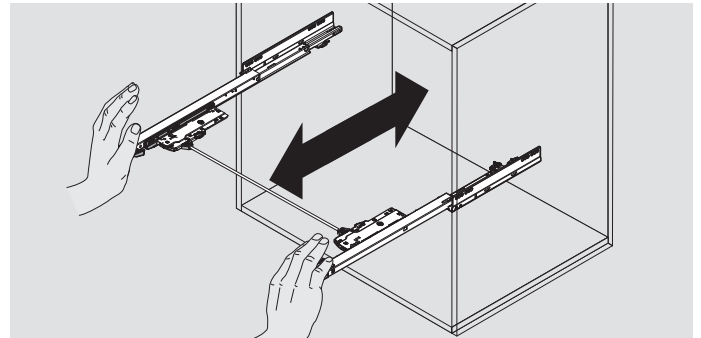


For optimal function and an optimised trigger range for TIP-ON BLUMOTION, use synchronisation linkage.

### Operation



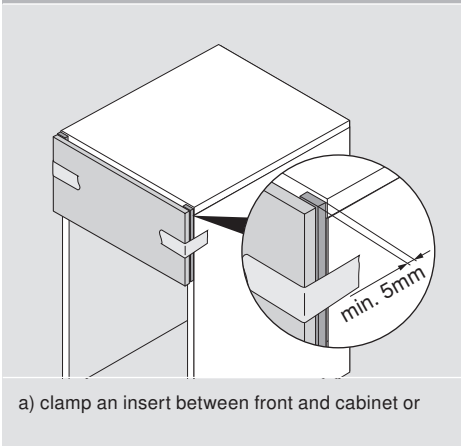
To tension TIP-ON springs, always close pull-outs with TIP-ON BLUMOTION with some force. Reduce the amount of force used accordingly for loaded pull-outs.



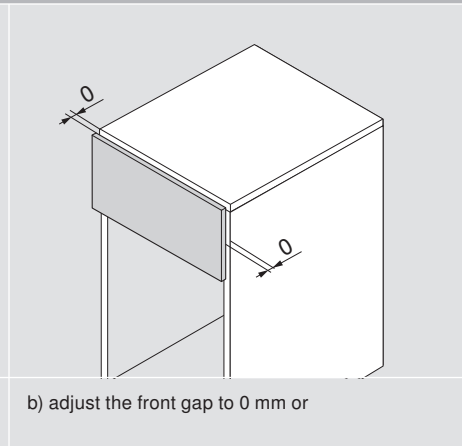
For LEGRABOX/MOVENTO: Open or close cabinet profiles with synchronisation in parallel, in order to prevent damage to the synchronisation adapter.

### Transportation

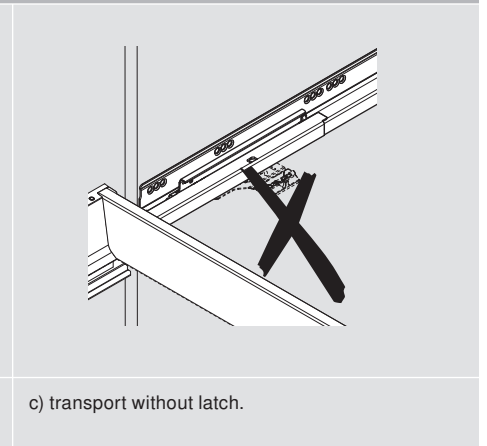
To prevent damage to pre-assembled furniture during transportation:



a) clamp an insert between front and cabinet or



b) adjust the front gap to 0 mm or



c) transport without latch.



You can find further information on  
TIP-ON BLUMOTION assembly at:  
➤ [www.blum.com/documentstiponblumotion](http://www.blum.com/documentstiponblumotion)



Blum Canada Ltd.  
7135 Pacific Circle  
Mississauga, ON, L5T 2A8  
Tel.: 905-670-7920  
Fax: 905-670-7929  
Long Dist.: 1-800-670-9254  
E-mail: [info.ca@blum.com](mailto:info.ca@blum.com)  
[www.blum.com](http://www.blum.com)



All content is copyrighted by Blum.  
Subject to technical modifications and changes to the range without notice.  
Printed in Canada · IDNR: 04823084 FO-092EN-CA TOBTIPPS