



# Manufacturer tips for TIP-ON BLUMOTION

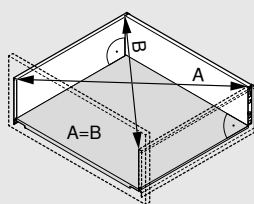
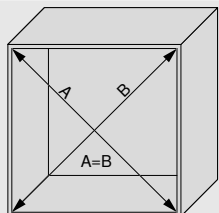
[www.blum.com](http://www.blum.com)

 **blum**<sup>®</sup>

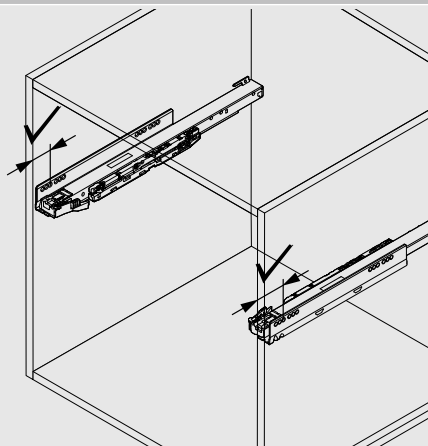
## Manufacturer tips

In order for you as a manufacturer and your customers as future users to enjoy long-term use of pull-outs with TIP-ON BLUMOTION, we ask you to please consider the following points during manufacture, assembly and transportation.

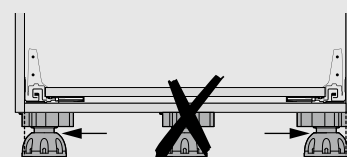
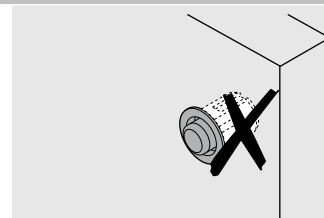
### Furniture construction



To ensure a front gap of at least 2.5 mm, precise manufacturing is required, so it should be ensured that planned measurements and angle accuracy are adhered to.



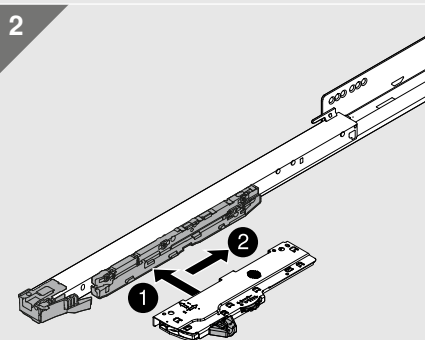
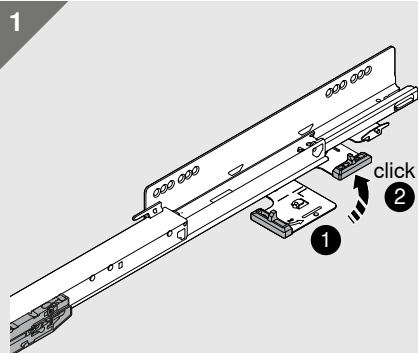
Observe exact depth position of both cabinet profiles.



Do not use a bumper, as this restricts the triggering function. The cabinet bottom may not bend upwards, therefore do not use a fifth base leg.

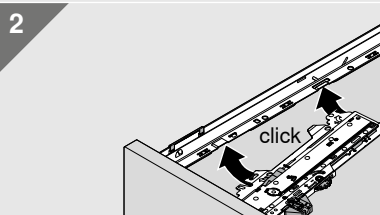
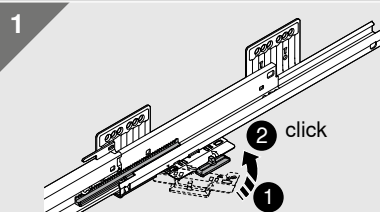
### Manufacture and adjustment of fittings

#### LEGRABOX / MOVENTO

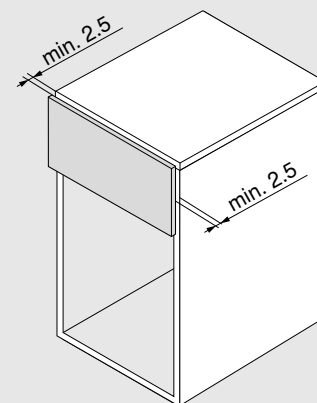
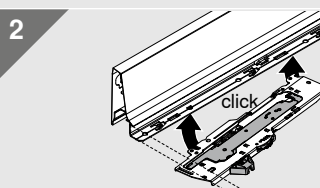
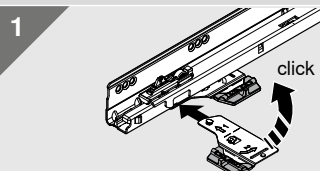


Engage TIP-ON BLUMOTION components until there is an audible clicking sound.

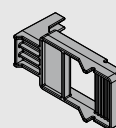
#### MERIVOBX



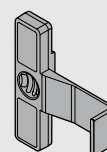
#### TANDEMBOX



#### LEGRABOX / MOVENTO



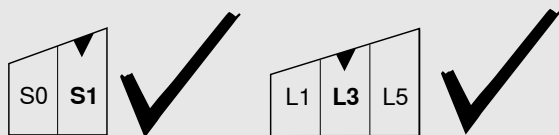
#### MERIVOBX / TANDEMBOX



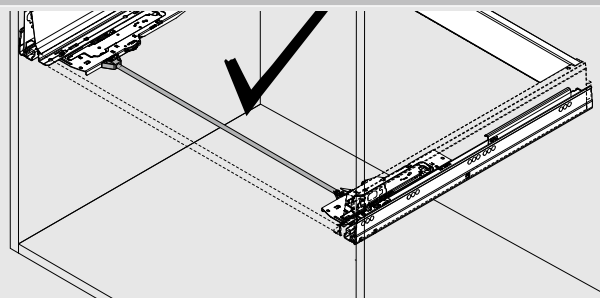
The front gap should be adjusted identically on each side to a minimum of 2.5 mm.

## Manufacturer tips

### Manufacture and adjustment of fittings

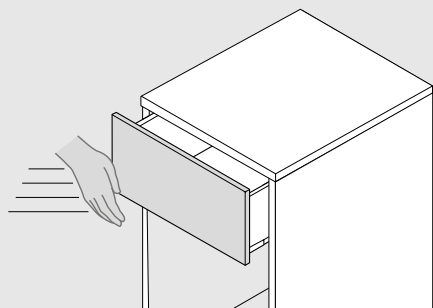


Select the right TIP-ON BLUMOTION unit: The marking on the underside shows the respective load configuration (for short nominal lengths S0 and S1, for longer nominal lengths L1, L3 and L5).

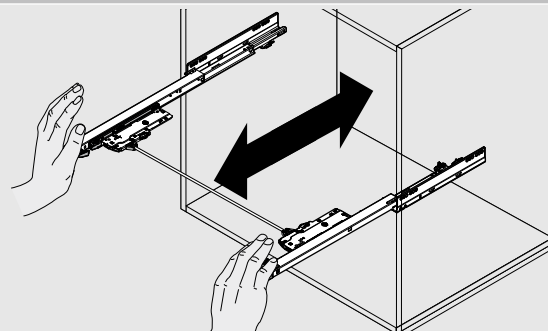


For optimal function and an optimised trigger range for TIP-ON BLUMOTION, use synchronisation linkage.

### Operation



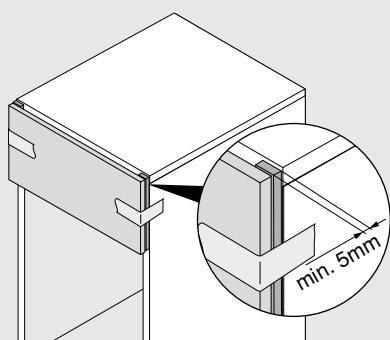
To tension TIP-ON springs, always close pull-outs with TIP-ON BLUMOTION with some force. Reduce the amount of force used accordingly for loaded pull-outs.



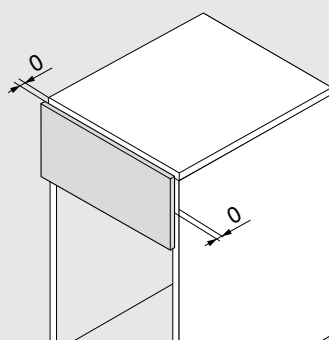
For LEGRABOX/MOVENTO: Open or close cabinet profiles with synchronisation in parallel, in order to prevent damage to the synchronisation adapter.

### Transportation

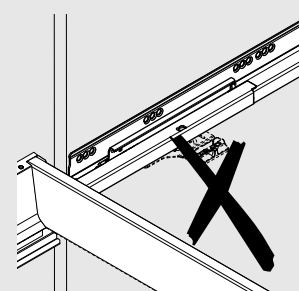
To prevent damage to pre-assembled furniture during transportation:



a) clamp an insert between front and cabinet or



b) adjust the front gap to 0 mm or



c) transport without latch.



You can find further information on  
TIP-ON BLUMOTION assembly at:

[www.blum.com/documentstiponblumotion](http://www.blum.com/documentstiponblumotion)

Blum Vietnam Co., Ltd  
Ground Floor  
Saigon Mansion Building  
No.3 Vo Van Tan Street  
Vo Thi Sau Ward  
Dist.3, HCM City  
Vietnam  
Tel.: +84 28 3822 3304  
Email: info.bvn@blum.com

1st Floor, CT2 Building  
Trang An Complex  
No.1 Phung Chi Kien Street  
Nghia Do Ward  
Cau Giay District, Hanoi  
Vietnam  
Tel.: +84 24 3359 5999  
Email: info.bvn@blum.com

Julius Blum GmbH  
Furniture Fittings Mfg.  
6973 Höchst, Austria  
Tel.: +43 5578 705-0  
Fax: +43 5578 705-44  
E-mail: info@blum.com  
www.blum.com

Our sites in Austria, Poland and China are certified to the international standards mentioned below.  
Our site in the USA is certified to ISO 9001.  
Our site in Brazil is certified to ISO 9001, ISO 14001 and ISO 45001.



**ISO 9001**  
Certified Quality  
System



**ISO 14001**  
Certified Environmental  
System



**ISO 50001**  
Certified Energy  
System

 **blum**®



Look for our  
FSC™-certified  
products

All content is copyrighted by Blum.  
Subject to technical modifications and changes to the range without notice.  
IDNR: 000.000.0 - FO064/3 EN-VN/05.22