

SERVO-DRIVE

by Blum

BLUMOTION

by Blum

EN



SERVO-DRIVE

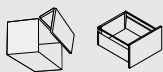
Installation instructions

www.blum.com

 **blum**[®]

Table of contents

Using the installation instructions.....	4
Intended use	4
Safety	4
Warning signs and danger symbols.....	4
Blum transformer safety distance.....	6
Structural changes and spare parts	7
Troubleshooting	7
Info regarding the Machine Directive 2006/42/EC	7
Disposal	8
Simplified EU Declaration of Conformity – Julius Blum GmbH	9
SERVO-DRIVE overview drawing	10
AVENTOS function.....	12
LEGRABOX/TANDEMBOX/MOVENTO/TANDEM function	12
SERVO-DRIVE für AVENTOS AVENTOS HK top	13
Distribution cable installation.....	13 15
Drive unit adjustment	13
Drive unit assembly.....	13 15
SERVO-DRIVE switch installation	14 16
SERVO-DRIVE for LEGRABOX/TANDEMBOX/MOVENTO/TANDEM	17
Drive unit assembly.....	17
Horizontal cross member assembly	17
Vertical cross member assembly.....	17
Assembly of ladder unit with horizontal and vertical cross members.....	18
Attachment bracket 1 tier, 2 tier	19
Upper attachment bracket	20
Blum distance bumper.....	21
Cabling overview drawing.....	21
Connecting node assembly	22
Transformer assembly	22
Cable diagram.....	23



SERVO-DRIVE für AVENTOS AVENTOS HK top	24 30
Button layout	24 30
Start-up.....	25 31
Activating the SERVO-DRIVE switch.....	25 31
Starting reference run	26 32
Activating synchronisation	27 33
Activating collision avoidance.....	28 34
Reset motion	29 36
Reset wireless	29
Cover cap assembly.....	29 36
Replacing the SERVO-DRIVE switch battery	29 36
 SERVO-DRIVE for LEGRABOX/TANDEMBOX/MOVENTO/TANDEM – General information	38
Drive unit selector switch	38
Lever extension	38
Trigger guidance	38
Synchronisation cable.....	38
 Blum transformer removal	39
Connecting node removal.....	39
 SERVO-DRIVE for AVENTOS	40
Removal	40
 LEGRABOX/TANDEMBOX/MOVENTO/TANDEM	41
Drive unit removal	41

Using the installation instructions

Please read the installation instructions and safety information before SERVO-DRIVE installation.

We recommend that you use the orientation diagram for easier identification of the parts being described.

These installation instructions apply to the SERVO-DRIVE electrical motion support system for:

- the lift systems AVENTOS HF, AVENTOS HS, AVENTOS HL, AVENTOS HK and AVENTOS HK top
- the box systems LEGRABOX and TANDEMBOX as well as the runner systems MOVENTO and TANDEM

However, only AVENTOS HF is used as an example in the illustrations.

Please see the special AVENTOS installation instructions for the assembly steps for the mechanical AVENTOS HF, HS, HL, HK and HK top lift systems without SERVO-DRIVE.

Intended use

SERVO-DRIVE supports the opening and closing of lift systems and/or the opening of pull-out elements, and may only be used under the following conditions:

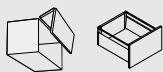
- In dry, enclosed rooms.
- In combination with AVENTOS lift systems and/or pull-out systems from Julius Blum GmbH within permitted technical specifications.
- In combination with a Blum transformer.

Safety

SERVO-DRIVE complies with current safety standards.

Nevertheless, there are certain risk factors if these installation instructions are not followed. Please be aware that Julius Blum GmbH is not responsible for incidental or consequential damages that may arise due to non-compliance with these installation instructions.

- All national standards must be followed for SERVO-DRIVE assembly. This includes, in particular, those related to the mechanical safety of moving parts and electrical cabling.
- Only qualified technicians may install/replace Blum components,



modify the position of the Blum transformer or modify any cabling.

- The device may only be connected to a power supply that corresponds to the type and frequency listed on the serial tag (see Blum transformer).
- The outlet must be freely accessible.
- Only 1 Blum transformer can be connected to each distribution cable.
- Maintain safety distances to the Blum transformer listed in the installation instructions.
- Make sure that moisture cannot penetrate the Blum transformer and drive unit.
- Before starting repair or maintenance work, unplug the Blum transformer to disconnect the power.
- The drive unit, Blum transformer and SERVO-DRIVE switch should only be cleaned with a moist cloth because penetrating moisture and aggressive cleaning materials can damage the electronics.
- Do not touch the area around the lever during the opening and closing motion.
- No damaged parts should be used.
- Sharp edges may damage the cable.
- Neither the Blum transformer nor any cabling should come into contact with moving parts.
- Never take apart a drive unit or a SERVO-DRIVE switch.

Warning signs and danger symbols

⚠ WARNING	WARNING indicates a danger that could lead to death or serious injury if not heeded.
NOTE	The NOTE sign indicates information that should be followed.

⚠ WARNING

Danger of electric shock

- Never open a Blum transformer. There is a danger of electric shock.
- Before starting repair or maintenance work, unplug the Blum transformer to disconnect the power.

⚠ WARNING

There is a danger of injury if the lever springs upward.



There is a danger of injury from the lever springing upwards when the front is removed.



- Do not push down on lever arm, instead, remove the arm if it is in the way (not possible on HK variant).
- Do not connect the transformer to the power supply while the fronts are unattached.

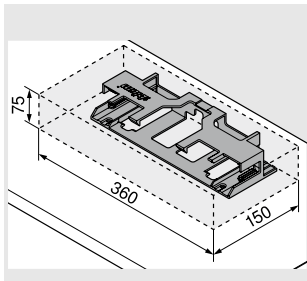
Blum transformer safety distance

NOTE

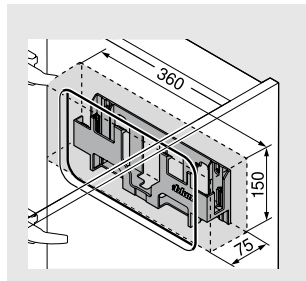
A safety distance of 30 mm must be maintained for air circulation; otherwise, there is a risk that the Blum transformer could overheat.

- The dimensions in the drawing take into account the safety distance.

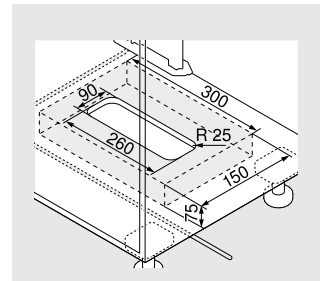
Assembly on the top panel

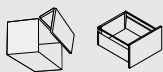


Panel fixing



Base fixing





Structural changes and spare parts

Structural changes and replacement parts not approved by the manufacturer affect the safety and functionality of SERVODRIVE and are, therefore, not allowed.

- Only use original replacement parts from Julius Blum GmbH.
- Blum components are the only devices that should be connected to the Blum transformer.

Troubleshooting

For troubleshooting information, please go to:
www.blum.com/sd/troubleshooting

Info regarding the Machine Directive 2006/42/EC

The SERVODRIVE drives for opening | closing lift systems, doors and pull-outs are subject to the provisions of the European Machinery Directive 2006/42/EC. Based on the guide to application of the Machinery Directive (Edition 2.2), Blum drives are a complete machine. If SERVODRIVE drives are fitted to furniture in accordance with the current Blum specifications (Blum catalogue, instruction leaflets and installation instructions), all the requirements of the Machinery Directive are covered by the Blum declaration of conformity. If the furniture deviates from the Blum specifications, the conformity must be confirmed by the distributor of the furniture.

Note: The Machinery Directive applies to products placed on the market within the European Economic Area (EEA) + Switzerland + Turkey + North Macedonia. The requirements of other countries are covered by certifications.

For detailed information regarding the Machine Directive, please go to: www.blum.com/sd/guideline

Disposing of electrical and electronic appliances

Electrical and electronic appliances must not be disposed of with household waste at the end of their service life. Ask your local authority for information on how to proceed. Blum electrical and electronic appliances meet the requirements of the WEEE Directive

2012/19/EU. Electrical and electronic appliances are collected separately, which enables old appliances to be reused or recycled, and their materials to be reused. This is intended to prevent any hazardous materials that may be contained in the appliances from damaging the environment and health during disposal. In most cases, the entire appliance does not need to be disposed of according to the WEEE guidelines, but only the part that is equipped with electrical components. Please refer to the disassembly instructions for information on this. There are free collection points for returning electrical and electronic appliances in your area. You will find further information on this under the following link: www.blum.com/recycling

Disposing of batteries

Batteries must not be disposed of with household waste at the end of their service life. Ask your local authority for information on how to proceed. Batteries used at Blum meet the requirements of the Battery Directive 2006/66/EC. Batteries are collected separately, which enables the batteries or their materials to be recycled. This is intended to prevent any hazardous materials that may be contained in the appliances from damaging the environment and health during disposal. Please refer to the disassembly instructions for information on removing batteries. There are free collection points for returning batteries in your area. Please avoid shorting the contact surfaces when disposing of batteries.

Simplified EU declaration of conformity

Julius Blum GmbH hereby declares that all electrical and electronic article types of Julius Blum GmbH conform to the Directive 2011/65/EU.

Julius Blum GmbH hereby declares that the machine types Z10A3000 and Z10C5000 conform to the Directive 2006/42/EC and Directive 2014/30/EU.

Julius Blum GmbH hereby declares that the machine types 23KA001, 23KA000, 21FA001, 21FA000, 21LA001, 21LA000, 21SA001, 21SA000, 21KA001 and 21KA000 conform to the Directive 2006/42/EC and Directive 2014/53/EU.

Julius Blum GmbH hereby declares that the radio equipment types 23.A00L83, 23P5020, 21P5020 and Z10C5007 conform to the Directive 2014/53/EU.

Julius Blum GmbH hereby declares that the electrical and electronic article types Z10ZE000 and Z10ZC000 conform to the Directive 2014/30/EU.

Julius Blum GmbH hereby declares that the Blum transformer types Z10NA300 and Z10NE030 conform to the Directive 2014/35/EC and Directive 2014/30/EU.

The complete text of the EU declaration of conformity is available at the following Internet address:

www.blum.com/compliance

Supplier's Declaration of Conformity 47 CFR § 2.1077 Compliance Information

Unique Identifier

Product-Family: SERVO-DRIVE
 Product-Types: 23KA00y | y ∈ {0, 1}, 23.A00L83
 21xA00y | x ∈ {F, L, S} ∧ y ∈ {0, 1}, Z10C5007
 23P5020, 21P5020 both with PCB 23P502L00
 21P5020 with PCB 21P502L00
 Z10A3000, Z10C5000
 Z10NA300, Z10NE030

Responsible Party-U.S. Contact Information

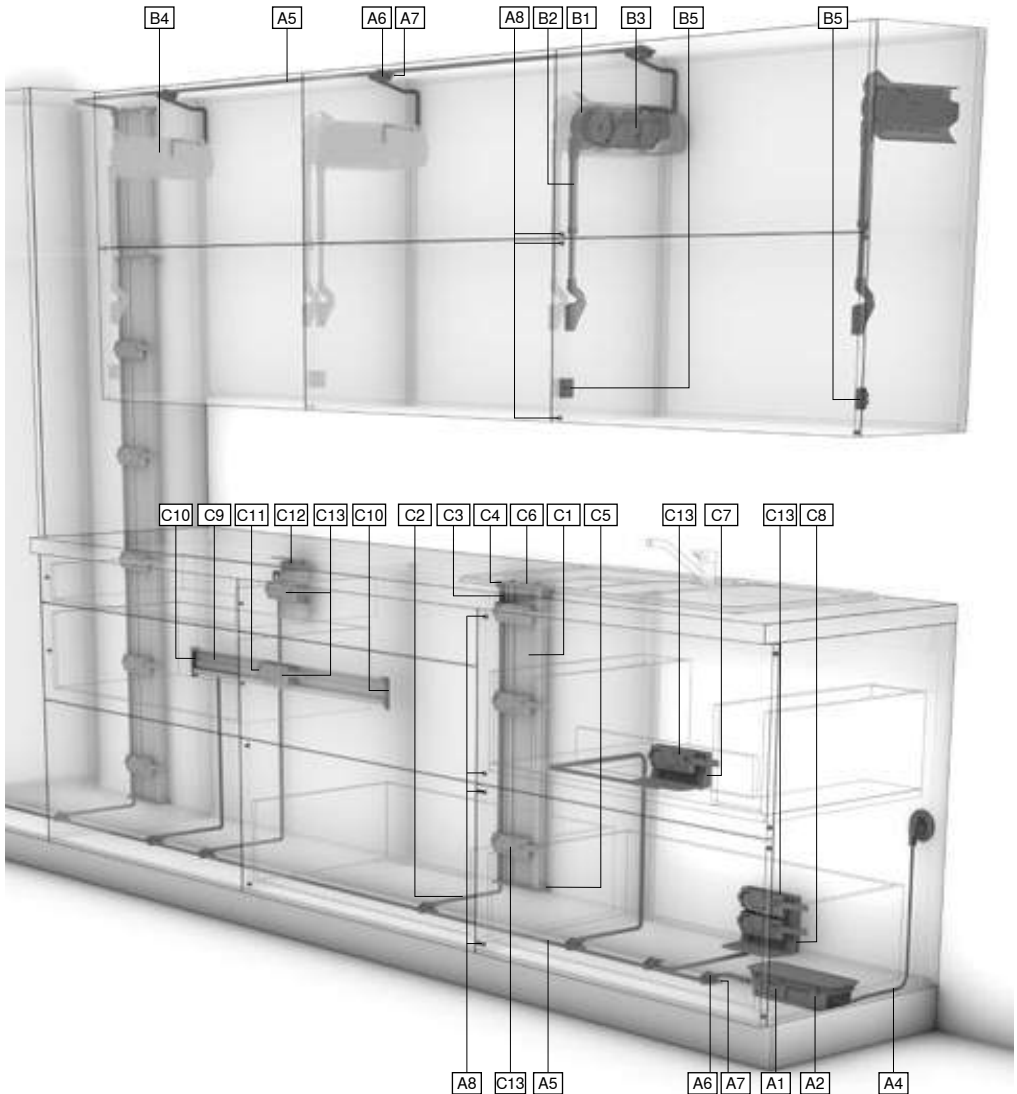
Blum Inc.
 7733 Old Plank Rd.
 Stanley, North Carolina
 28164

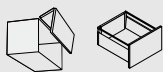
Mr. Christopher Muck
 Email: chris.muck@blum.com

FCC Compliance Statement

This device complies with Part 15 of the FCC Rules. Operation is subject to the following two conditions: (1) This device may not cause harmful interference, and (2) this device must accept any interference received, including interference that may cause undesired operation.

SERVO-DRIVE overview drawing





A1	Blum transformer with LED display
A2	Transformer unit housing for base fixing
A4	Flex
A5	Distribution cable for cutting to size
A6	Connecting node
A7	Cable end protector
A8	Blum distance bumper

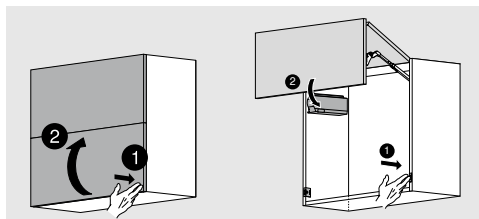
B1	Lift mechanism
B2	Telescopic arm or lever arm
B3	Drive unit with LED display
B4	Cover cap
B5	SERVO-DRIVE switch with battery display

C1	Bracket profile vertical
C2	Bracket profile cable (for power supply)
C3	Communication cable
C4	Upper/Back bracket profile attachment
C5	Lower bracket profile attachment
C6	Bracket profile cover cap
C7	Attachment bracket 1 tier
C8	Attachment bracket 2 tier
C9	Bracket profile horizontal
C10	Bracket profile attachment left/right
C11	Adapter for drive unit
C12	Upper attachment bracket with adapter for drive unit
C13	Drive unit

AVENTOS function

Electrical motion support system

The SERVO-DRIVE switch triggers the automatic opening and closing action of SERVO-DRIVE for AVENTOS.



Press on the front

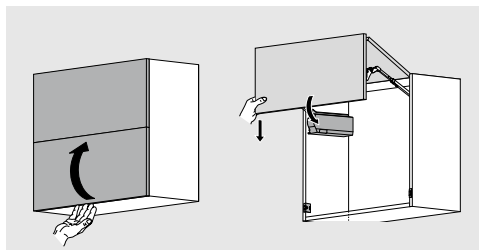
- The lift system opens automatically

Press on the SERVO-DRIVE switch

- The lift system closes automatically

Manual operation

The lift system can be opened or closed manually without restrictions without damaging SERVO-DRIVE for AVENTOS.

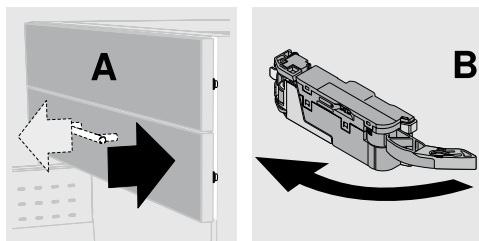


- Manual opening of the lift system by moving it upwards
- Manual closing of the lift system by moving it downwards

LEGRABOX/TANDEMBOX/MOVENTO/TANDEM function

Electrical motion support system

When the front and/or handle of the drawer (A) is pulled or pressed, the eject lever of the drive unit (B) swivels forward and opens the pull-out element a short distance.

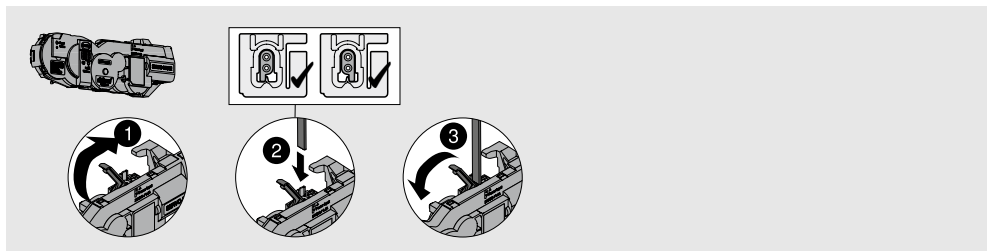




SERVO-DRIVE for AVENTOS

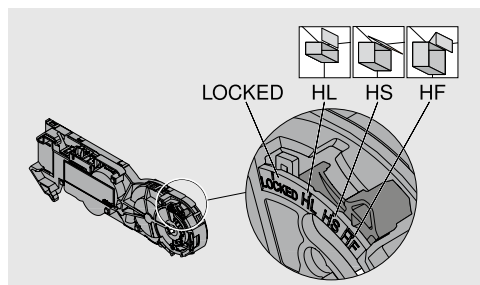
Distribution cable installation

HF / -HS / -HL / -HK

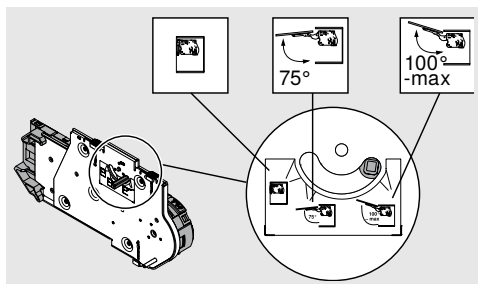


Drive unit adjustment

HF / -HS / -HL

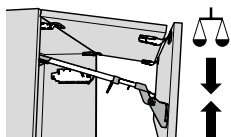


HK



Drive unit assembly

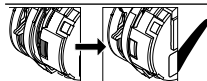
NOTE



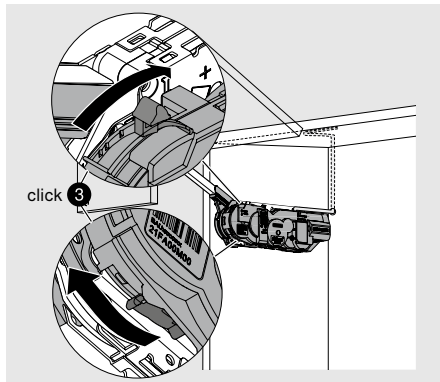
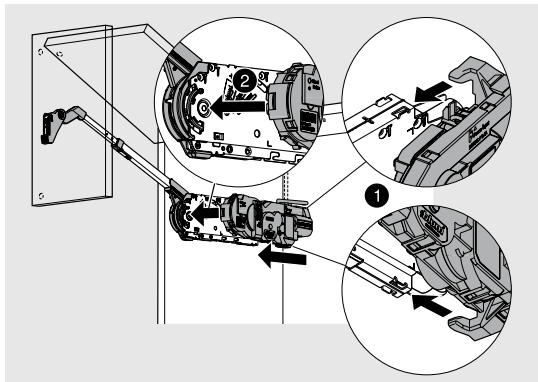
- Before SERVO-DRIVE for AVENTOS assembly, the lift mechanisms must be set so that the front remains open in different positions.
- The telescopic arm and/or lever arm must be in the completely open position for drive unit installation.
- If required, attach the opening angle stop only after drive unit installation and before the reference run.

HF / -HS / -HL

NOTE



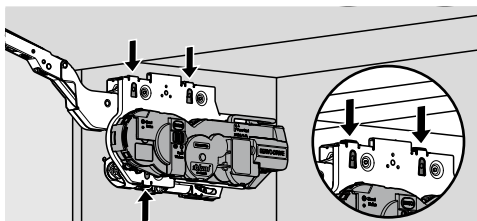
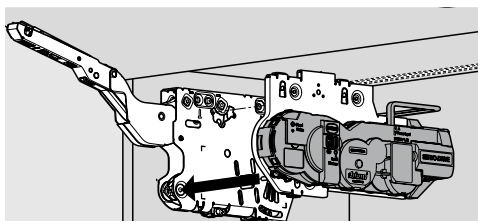
➤ The drive unit can be locked when the orange slide is no longer visible in the view window.



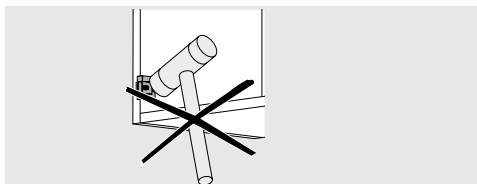
HK

NOTE

The drive unit can only be locked when the drive unit is inserted completely into the lift mechanism.



SERVO-DRIVE switch installation

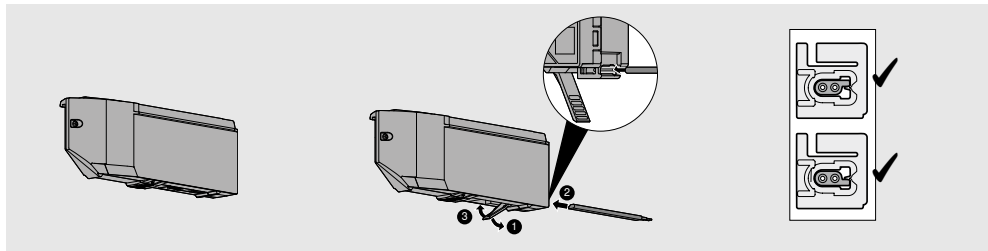




SERVO-DRIVE for AVENTOS

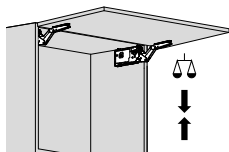
Distribution cable installation

AVENTOS HK top

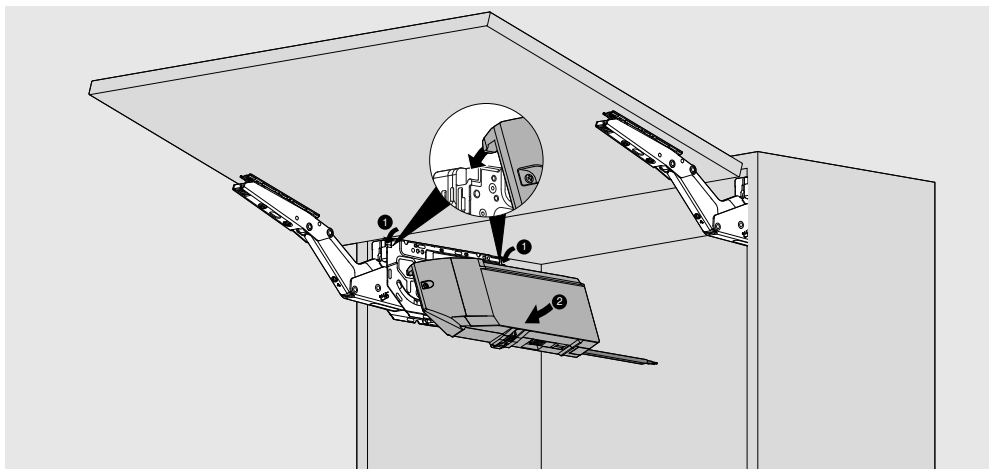


Drive unit assembly

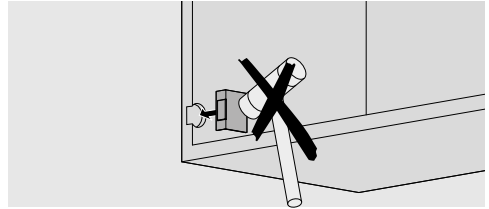
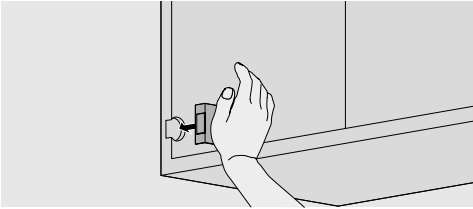
NOTE



- Before SERVO-DRIVE for AVENTOS assembly, the lift mechanisms must be set so that the front remains open in different positions.
- The telescopic arm and/or lever arm must be in the completely open position for drive unit installation.
- If required, adjust the opening angle stop only after drive unit assembly and before the reference run.



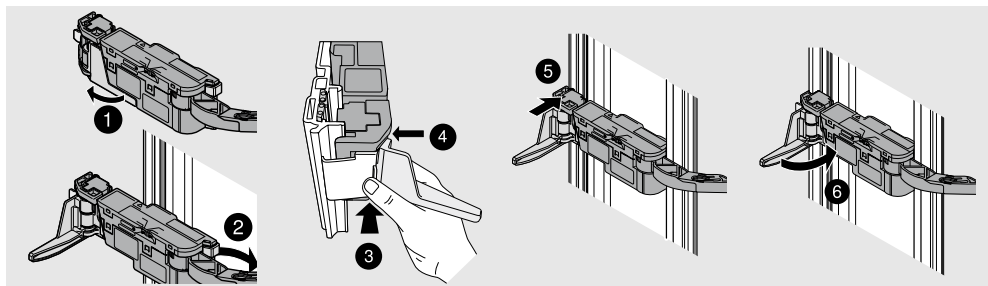
SERVO-DRIVE switch installation



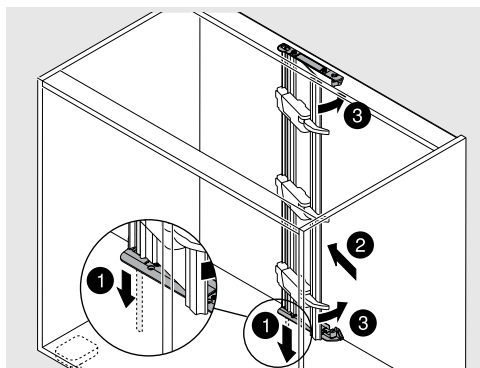
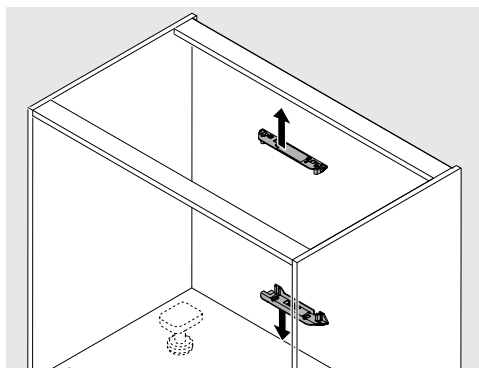


SERVO-DRIVE for LEGRABOX/TANDEMBOX/MOVENTO/TANDEM

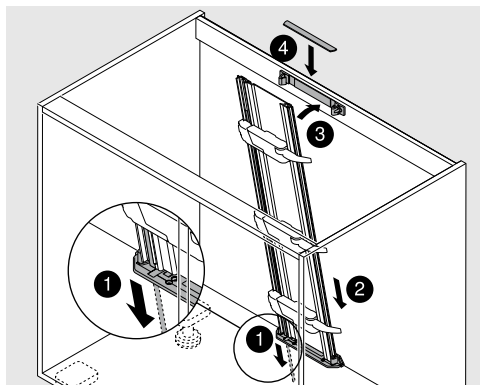
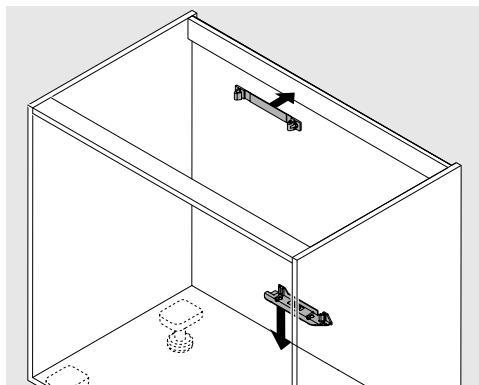
Drive unit assembly



Horizontal cross member assembly



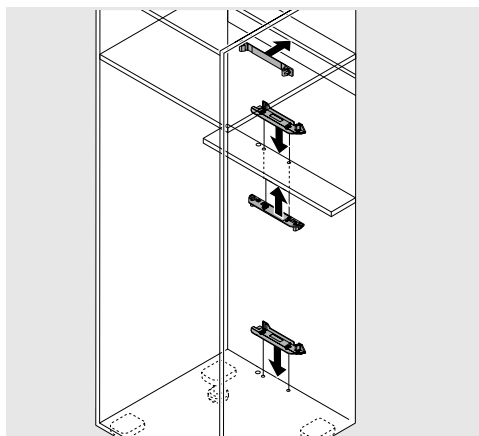
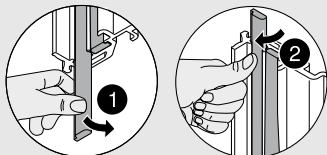
Vertical cross member assembly



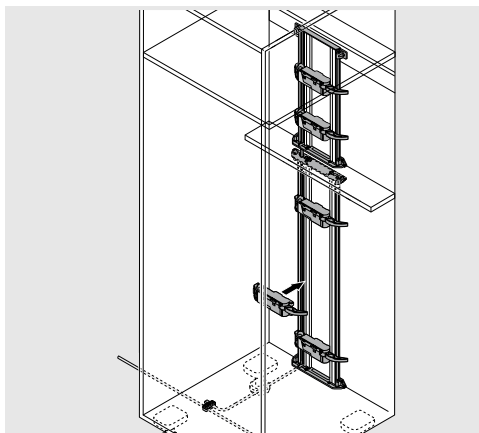
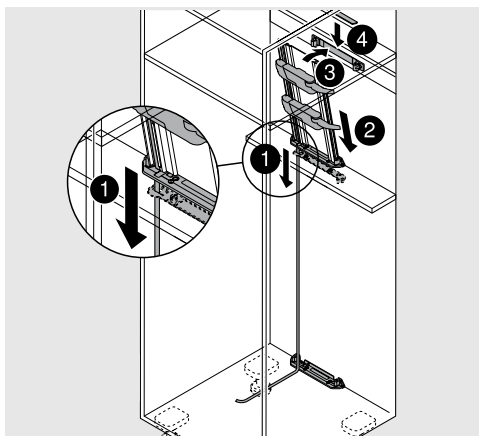
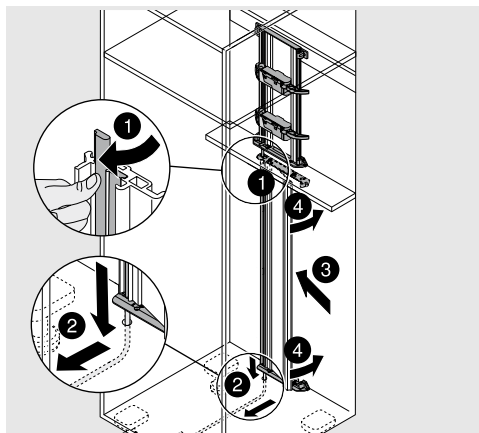
Assembly of larder unit with horizontal and vertical cross members

Equip bracket profile with distribution cable.

Remove pre-mounted bracket profile cable from both bracket profiles and insert a new, long bracket profile cable in the upper bracket profile.

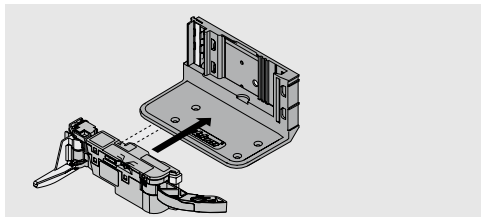


Insert long bracket profile cable into the lower bracket profile. Attach lower bracket profile.

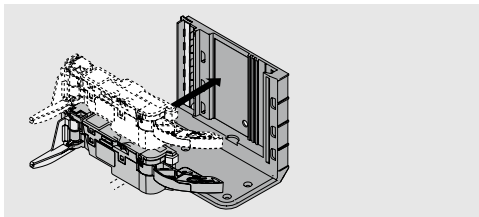




Attachment bracket 1 tier / 2 tier



Attachment bracket 1 tier



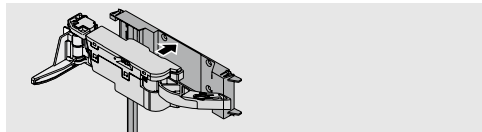
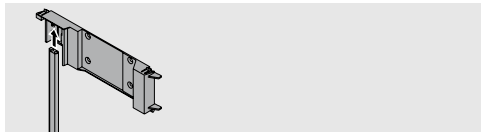
Attachment bracket 2 tier

A second drive unit can also be installed (optional).

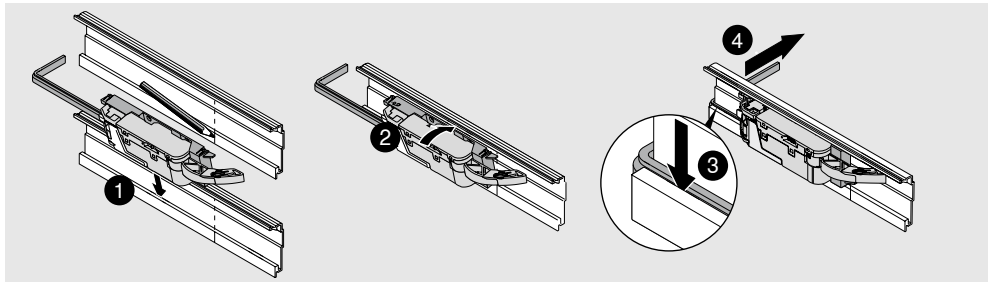
Bracket profile horizontal

Equip drive unit adapter bracket profile cable

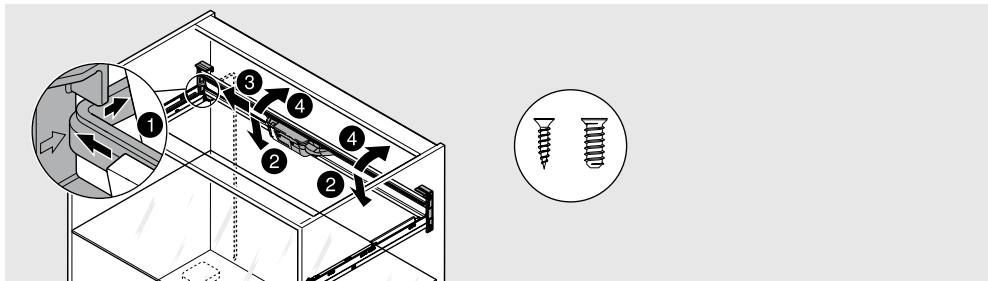
Attach drive unit to drive unit adapter



Install drive unit adapter to bracket profile horizontal



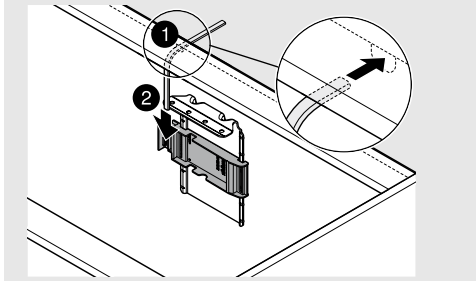
Install bracket profile horizontal in bracket profile attachment



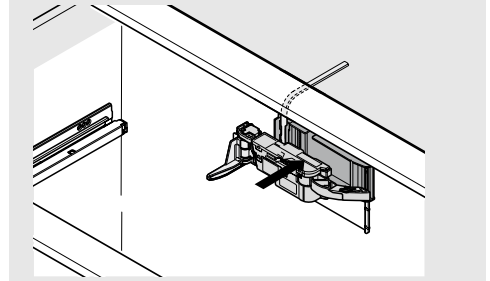
Upper attachment bracket

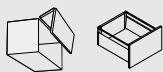
The bracket plate must be connected to the cross bar to make it secure.

Insert bracket profile cable



Attaching drive unit to adapter

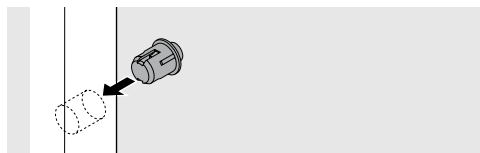




Blum distance bumper

NOTE

- Do not glue the Blum distance bumper

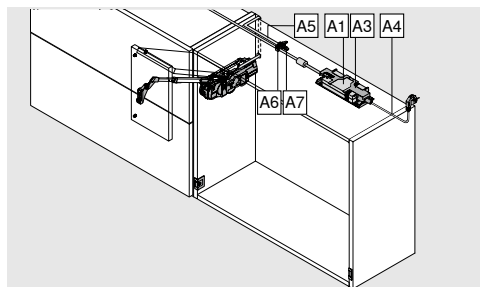


Installation in the front

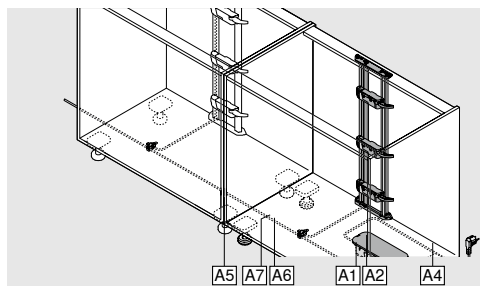
Aluminium frame: Installation in the cabinet side

Cabling overview drawing

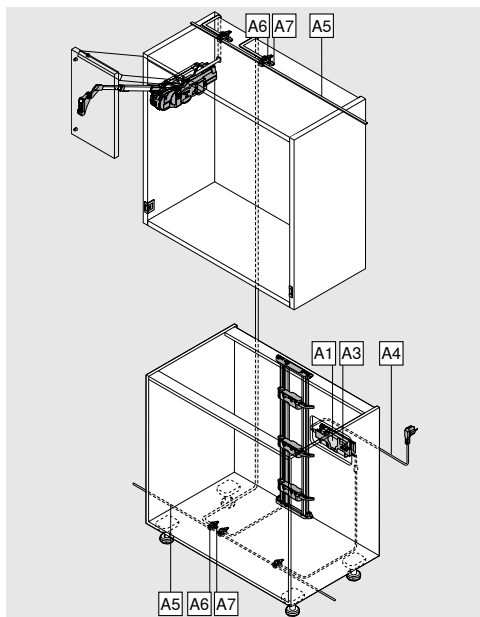
Wall cabinet



Base cabinet

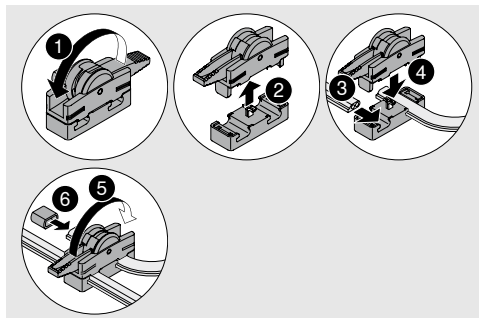


Wall cabinet/Base cabinet combination

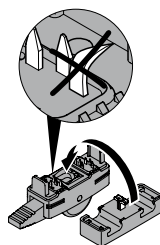


- | | |
|----|---|
| A1 | Blum transformer with LED display |
| A2 | Transformer unit housing for base fixing |
| A3 | Transformer unit housing for panel fixing |
| A4 | Flex |
| A5 | Distribution cable for cutting to size |
| A6 | Connecting node |
| A7 | Cable end protector |

Connecting node assembly



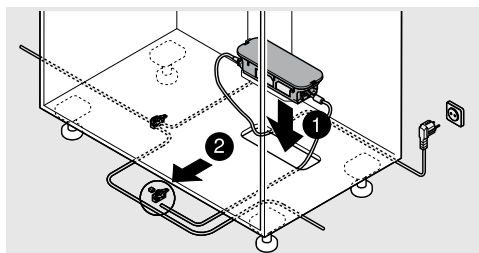
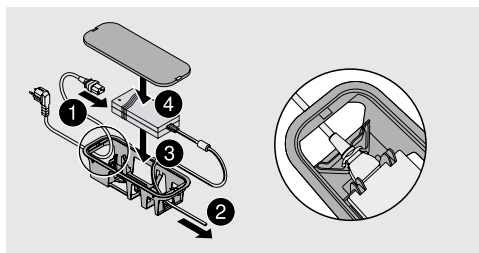
NOTE



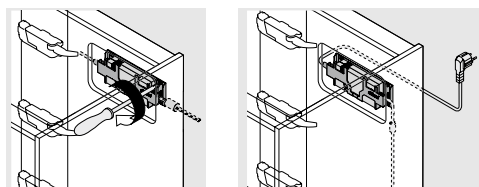
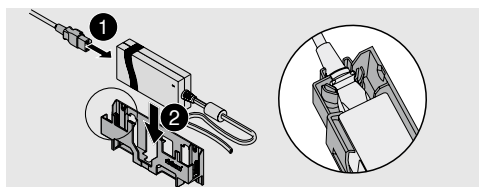
➤ Do not damage piercing pins.

Transformer assembly

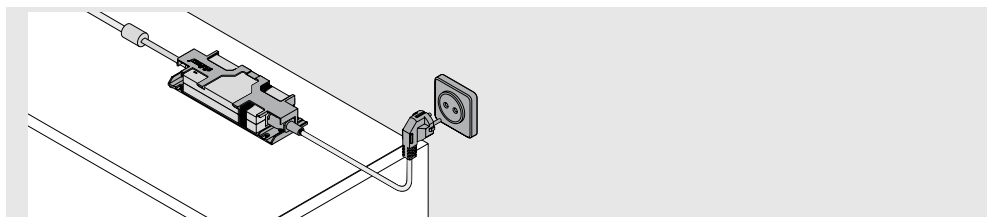
Transformer unit housing for base fixing



Transformer unit housing for panel fixing



Transformer unit housing – Assembly on the top panel



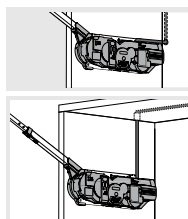
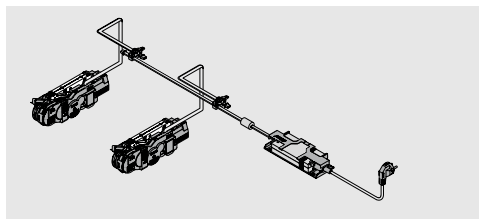


Cable diagram

NOTE

- Only 1 Blum transformer can be connected to each distribution cable.

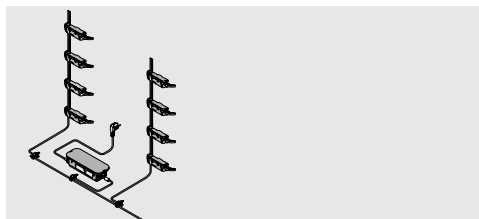
SERVO-DRIVE for AVENTOS



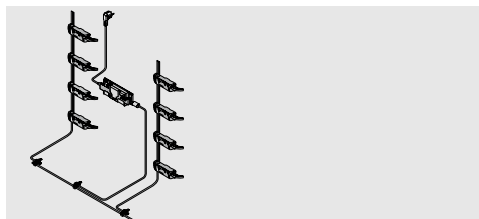
Back cabling

Upper cabling

SERVO-DRIVE for LEGRABOX/TANDEMBOX/MOVENTO/TANDEM

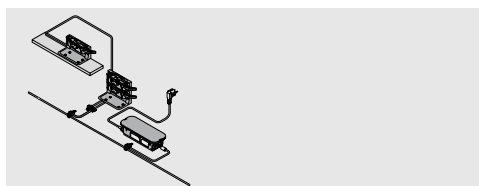


Transformer unit housing for base fixing

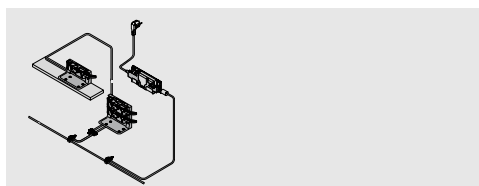


Transformer unit housing for panel fixing

Sink cabinet

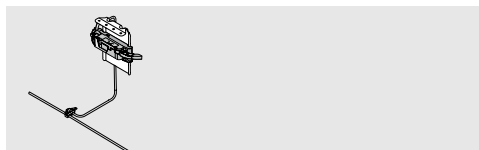


Transformer unit housing for base fixing

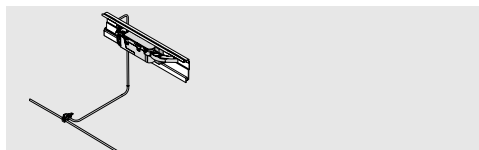


Transformer unit housing for panel fixing

Upper attachment bracket

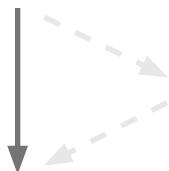


Bracket profile horizontal



SERVO-DRIVE for AVENTOS

A Activating the SERVO-DRIVE switch



Optional

Additional features

C Synchronisation activation

D Collision avoidance activation

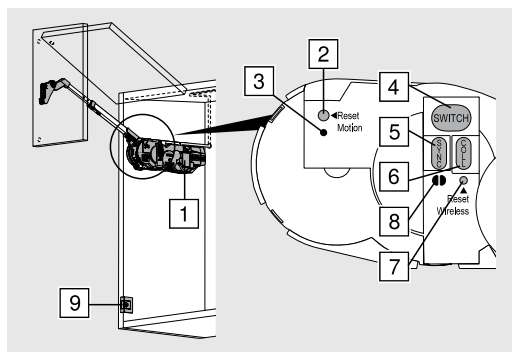
B Starting reference run

Deactivation

E Reset motion

F Reset wireless

Button layout



- | | |
|---|-------------------------|
| 1 | Drive unit |
| 2 | <Reset Motion> button |
| 3 | Motion LED |
| 4 | <SWITCH> button |
| 5 | <SYNC> button |
| 6 | <COLL> button |
| 7 | <Reset Wireless> button |
| 8 | Wireless LED |
| 9 | SERVO-DRIVE switch |



Start-up



Operation



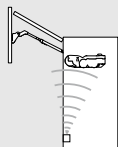
Lights up continuously



Flashes

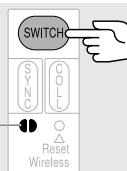
A

Activating the SERVO-DRIVE switch



Setting up the wireless connection between the SERVO-DRIVE switch and the drive unit
A switch can only be assigned to one drive unit.

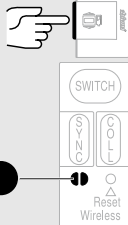
1



Press the <SWITCH> button

until the LED flashes green.

2



Press the SERVO-DRIVE switch

until the LED lights up green continuously.

3

Repeat procedure **A 1–2** for additional SERVO-DRIVE switches in the cabinet.



Operation



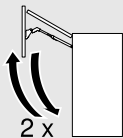
Lights up continuously



Flashes

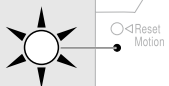
B

Starting reference run



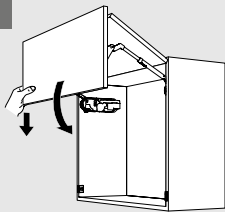
The drive unit recognises the required parameters using the reference run.

1



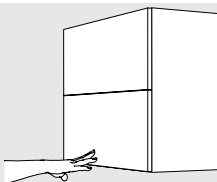
Reference run is required: LED flashes

2



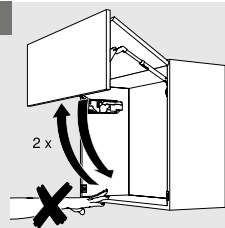
Close the front manually

3



Press on front: The reference run starts automatically

4



Front opens and closes 2x automatically: Under no circumstances should you try to manually interrupt or stop the process.

NOTE

If the reference run is interrupted, it should be reset
→ see Reset motion **E 1**. The reference run restarts.



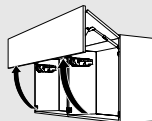
Operation



Lights up continuously



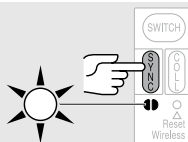
Flashes

C**Activating synchronisation**

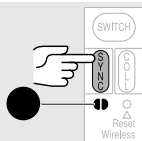
Up to three drive units can be synchronised allowing them to move simultaneously. This function is required for several cabinets with a uniform front.

1

Activating the SERVO-DRIVE switch → see **A 1–3**.

2

Press the <SYNC> button for the first drive unit
until the LED flashes green.

3

Press the <SYNC> button for the second drive unit
until the LEDs of both synchronised drive units light up green.

4

Repeat procedure **C 2–3** for all additional drive units.

5

Carry out reference run → see **B 1–4**.

NOTE

If there is an activation error, reset all drive units
→ see Reset wireless **F 1**.

Re-activate the SERVO-DRIVE switch, synchronisation and the reference run → see **A 1–3**, **C 2–4** and **B 1–4**.



Operation



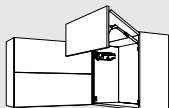
Lights up continuously



Flashes

D

Activating collision avoidance

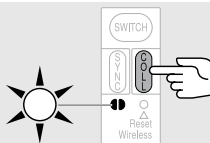


To avoid the collision of fronts, drive units (max. 6) can be linked so that only one front can be opened at a time. A front is prevented from opening as long as a linked front remains open.

1

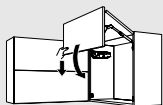
Activating the SERVO-DRIVE switch → see **A 1–3**.

2



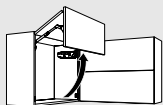
Press the <COLL> button for the first drive unit
until the LED flashes green.

3



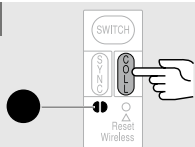
Close the front manually

4



Open the second front manually

5



Press the <COLL> button for the second drive unit
until the LED lights up Green (this will happen simultaneously on the unit behind the close door).

6

Repeat procedure **D 2–5** for all additional cabinets.

7

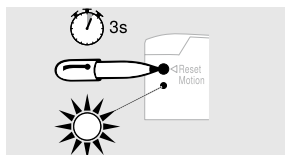
Carry out reference run → see **B 1–4**.

NOTE

If there is an activation error, reset all drive units

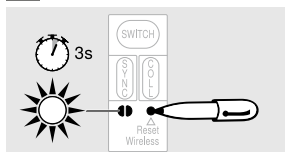
→ see Reset wireless **F 1**.

Re-activate the SERVO-DRIVE switch, collision avoidance and the reference run → see **A 1–3**, **D 2–6** and **B 1–4**.

**E Reset Motion**

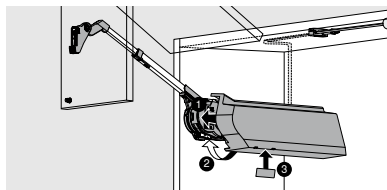
Resets the reference run and enables a new reference run to be started.

Press the <Reset Motion> button using a pen (at least 3 seconds) until the LED flashes quickly.

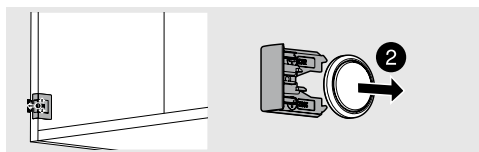
F Reset Wireless

Deactivates all functions: All active SERVO-DRIVE switches for the respective drive unit are deleted.

Press the <Reset Wireless> button using a pen (at least 3 seconds) until the LED flashes quickly.

Cover cap assembly**Replacing the SERVO-DRIVE switch battery**

When the battery power begins to weaken, the battery display (LED) begins to flash red



- Open the SERVO-DRIVE switch and remove the battery



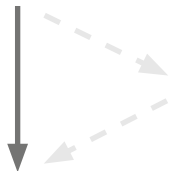
- Insert the new battery (type CR2032) and close the SERVO-DRIVE switch – note correct polarity +/-

NOTE

- The SERVO-DRIVE switch battery must not be recharged or thrown into fire.

SERVO-DRIVE for AVENTOS HK top

A Activating the SERVO-DRIVE switch



Optional

Additional features

C Synchronisation activation

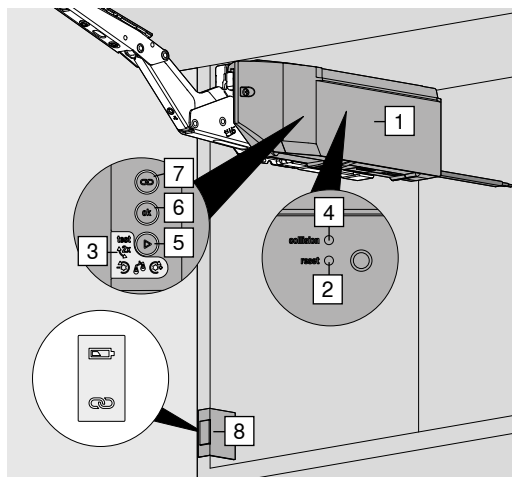
D Collision avoidance activation

B Starting reference run

Deactivation

E Reset

Button layout



- 1 Drive unit
- 2 <Reset> button
- 3 LED
- 4 <Collision> button
- 5 <Play> button
- 6 <Ok> button
- 7 <Connect> button
- 8 SERVO-DRIVE switch



Start-up



Operation

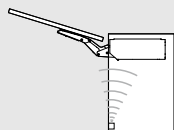


Lights up continuously

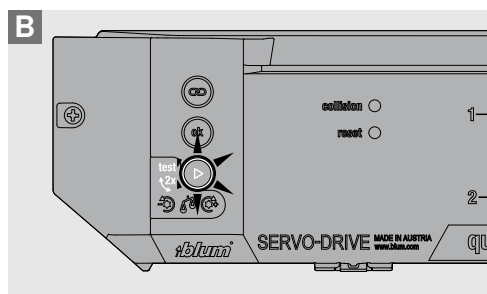
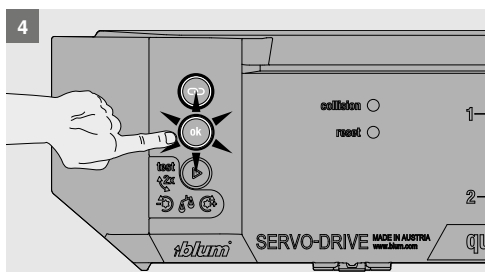
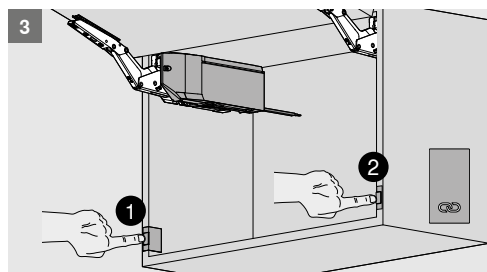
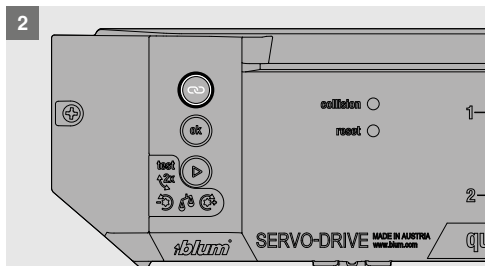
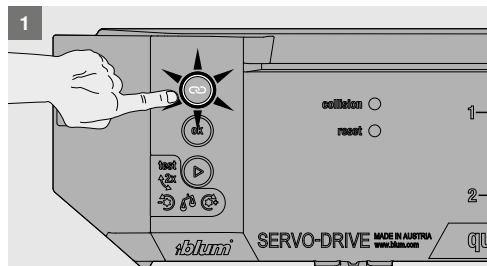


Flashes

A Activating the SERVO-DRIVE switch



Setting up the wireless connection between the SERVO-DRIVE switch and the drive unit
A switch can only be assigned to one drive unit.





Operation



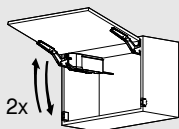
Lights up continuously



Flashes

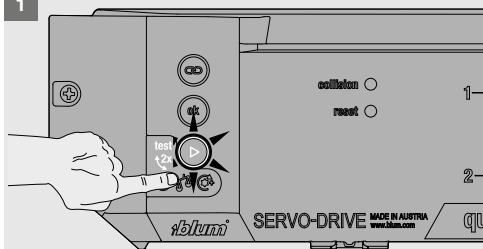
B

Starting reference run

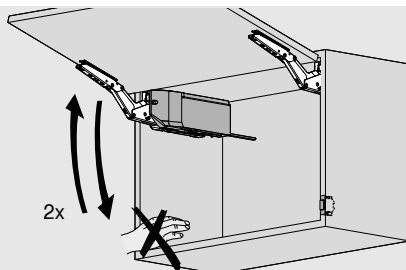


The drive unit recognises the required parameters using the reference run.

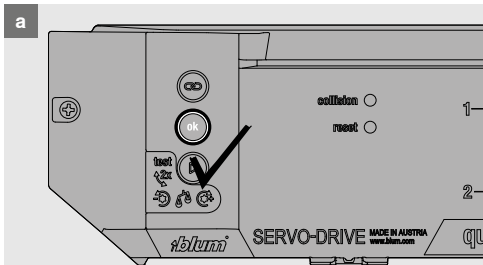
1



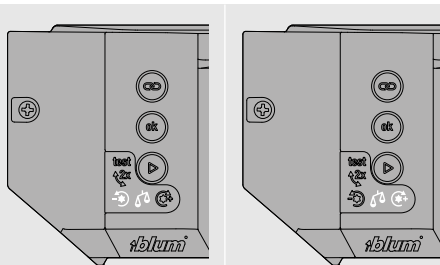
2



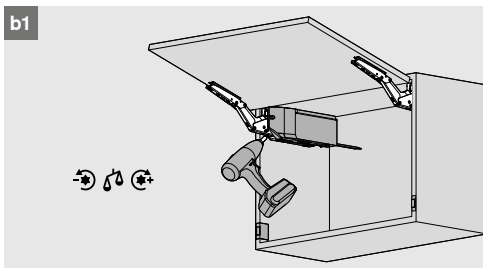
a



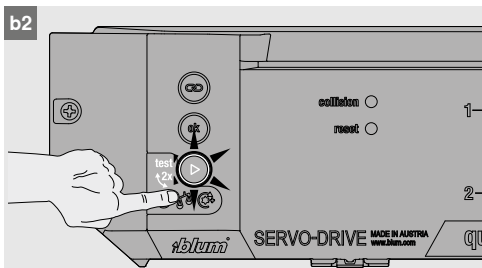
b



b1



b2





Operation

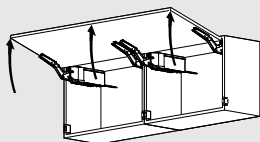


Lights up continuously



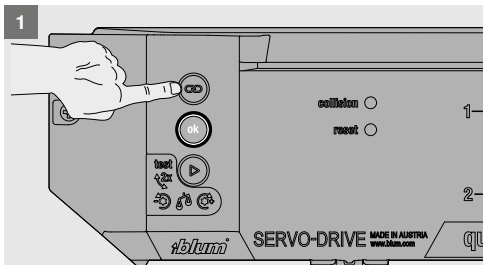
Flashes

C

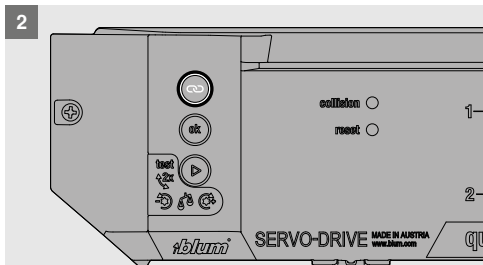
Activating synchronisation

Up to three drive units can be synchronised allowing them to move simultaneously. This function is required for several cabinets with a uniform front.

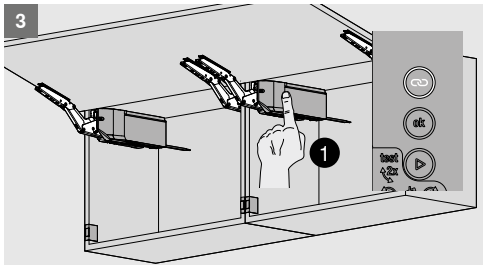
1



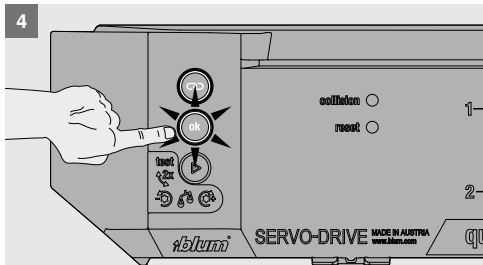
2



3



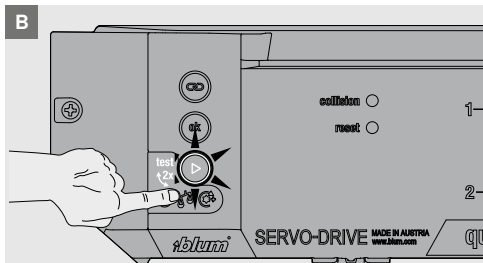
4



5



B





Operation

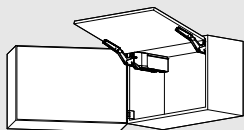


Lights up continuously

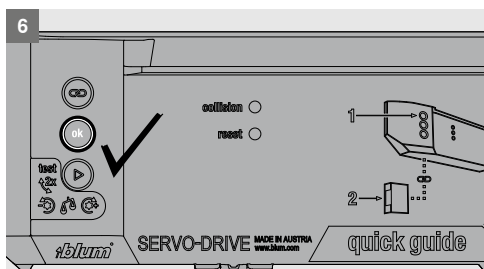
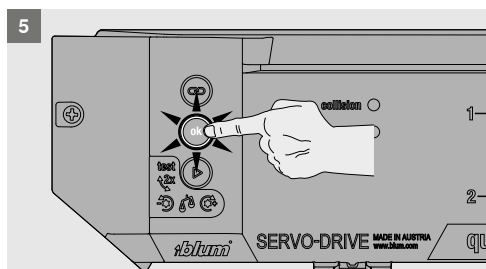
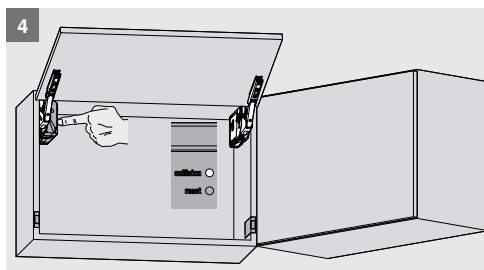
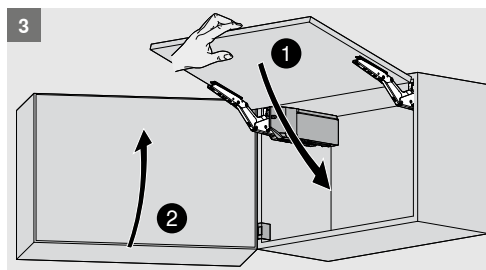
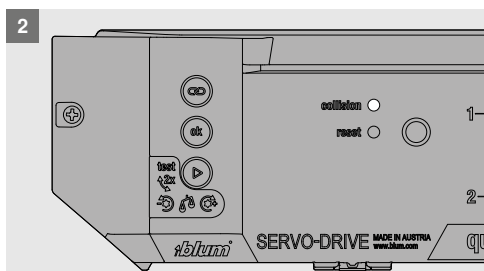
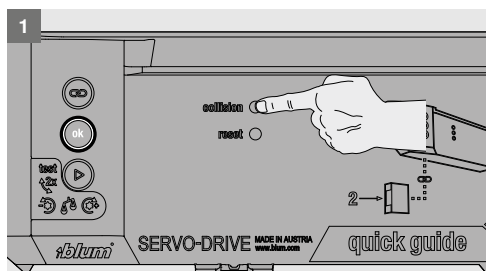


Flashes

D Activating collision avoidance



To avoid the collision of fronts, drive units (max. 6) can be linked so that only one front can be opened at a time. A front is prevented from opening as long as a linked front remains open.





EN



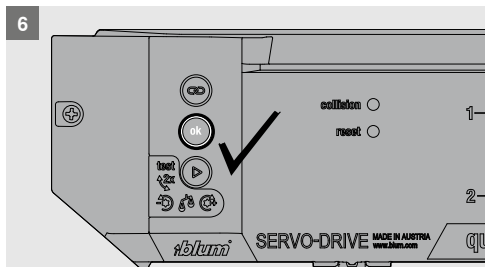
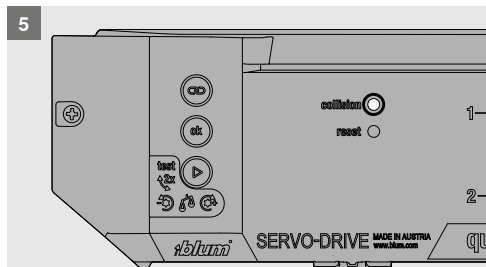
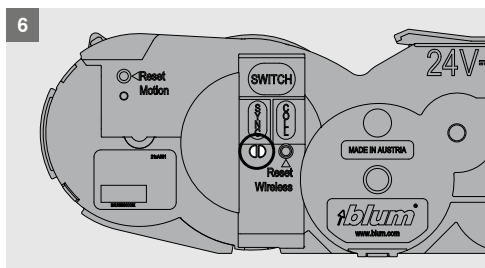
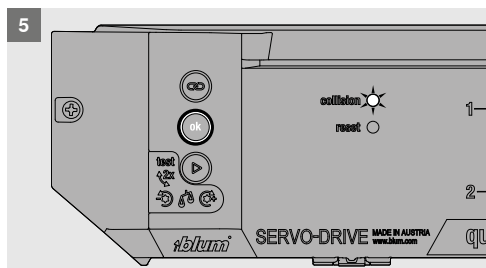
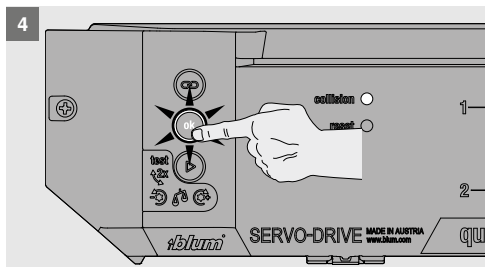
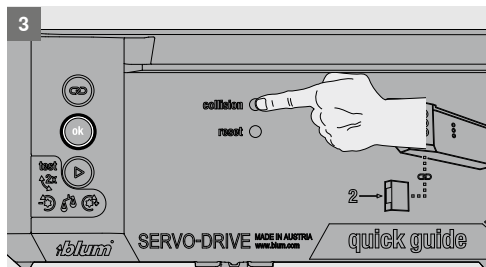
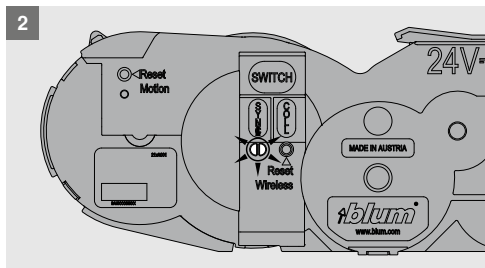
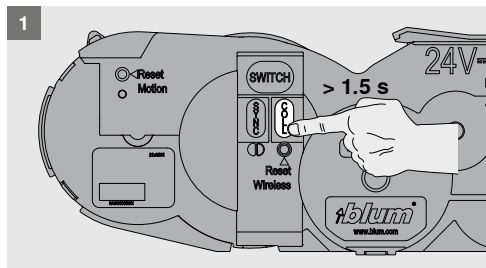
Operation



Lights up continuously

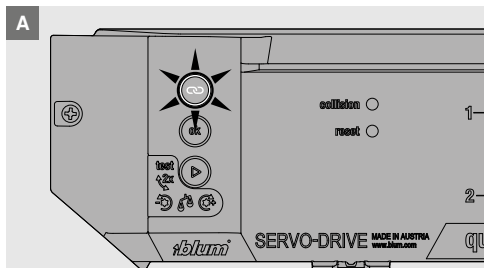
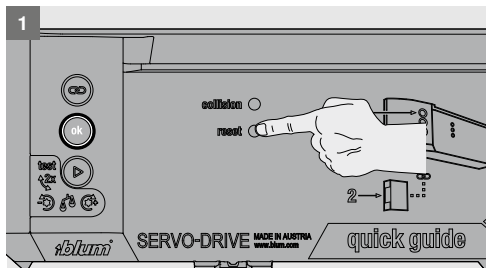


Flashes

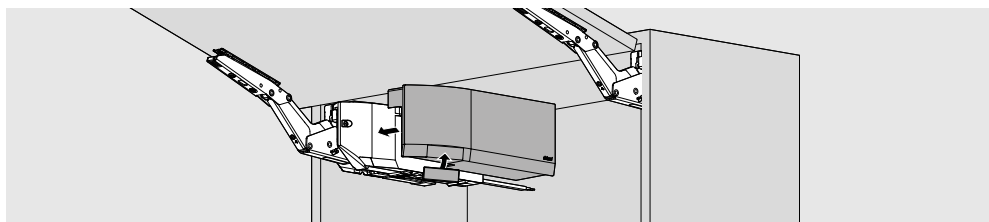


E Reset

Resets the drive unit to the factory setting.

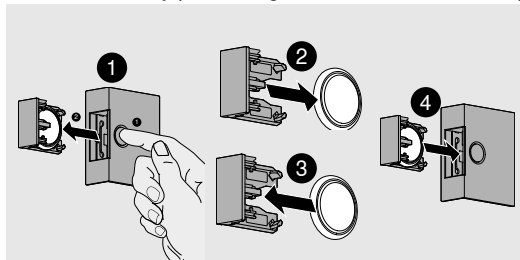


Cover cap assembly



Replacing the SERVO-DRIVE switch battery

When the battery power begins to weaken, the battery display (LED) begins to flash red



- Open the SERVO-DRIVE switch and remove the battery
- Insert the new battery (type CR2032) and close the SERVO-DRIVE switch – note correct polarity +/-

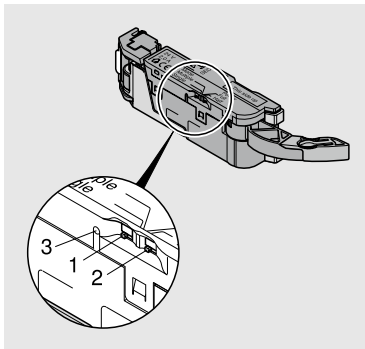
If the battery is inserted incorrectly, the SERVO-DRIVE switch battery display will flash red.

NOTE

The SERVO-DRIVE switch battery must not be recharged or discarded into fire.

SERVO-DRIVE for LEGRABOX/TANDEMBOX/MOVENTO/TANDEM – General information

Drive unit selector switch



Selector switch Mode (1)

Single: Only one drive unit moves (standard setting)

Multiple: When set to "Multiple," drive units move simultaneously to any drive unit that is activated on same vertical bracket profile. This does not apply on horizontal bracket profile or any L brackets.

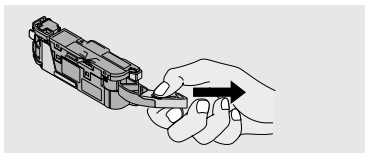
Selector switch Power (2)

Full: Standard setting

Half: For short nominal lengths (270–300 mm)

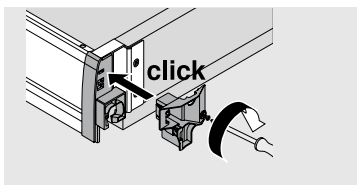
Operating mode display (LED) (3)

Lever extension



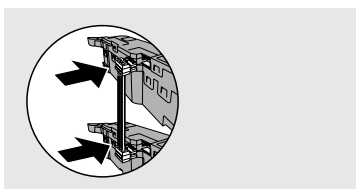
The lever extension must be removed for a cabinet width of 275-320 mm in combination with a steel back and for a cabinet width up to 300 mm in combination with a chipboard back.

Trigger guidance

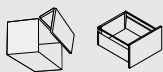


The lever guide must be attached and secured with screws for cabinet widths 275-320 mm if being used with chipboard backs.

Synchronisation cable



Two drive units that are supposed to open simultaneously must be connected via the synchronisation cable.



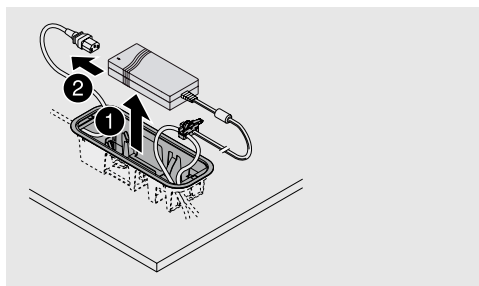
Blum transformer removal

⚠ WARNING

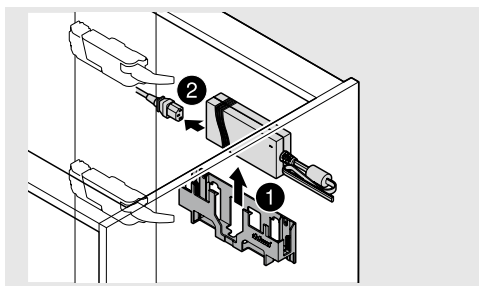
Danger of electric shock

- Never open a Blum transformer. There is a danger of electric shock.
- Before starting repair or maintenance work, unplug the Blum transformer to disconnect the power.

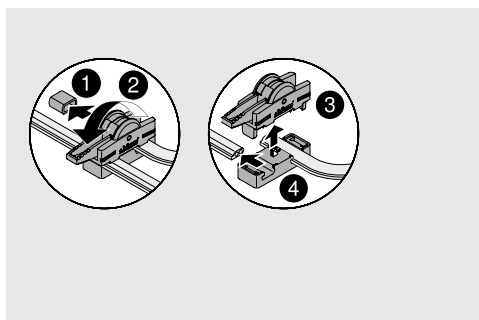
Transformer unit housing for base fixing



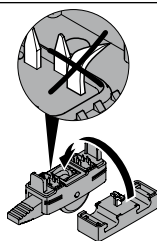
Transformer unit housing for panel fixing



Connecting node removal



NOTE



- Do not damage piercing pins.

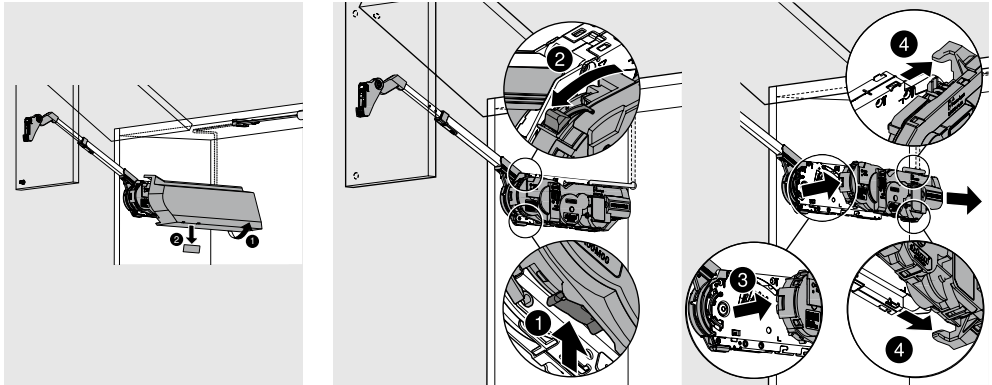
SERVO-DRIVE for AVENTOS

⚠ WARNING

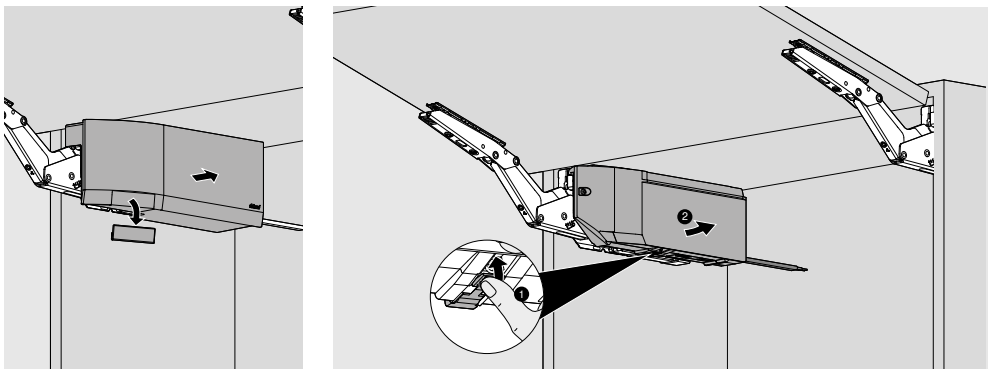
Danger of electric shock

- Never open a Blum transformer. There is a danger of electric shock.
- Before starting repair or maintenance work, unplug the Blum transformer to disconnect the power.

Removal

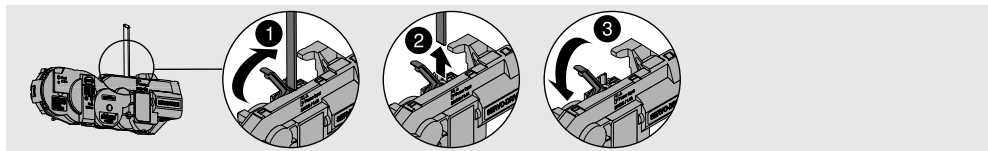


AVENTOS HK top

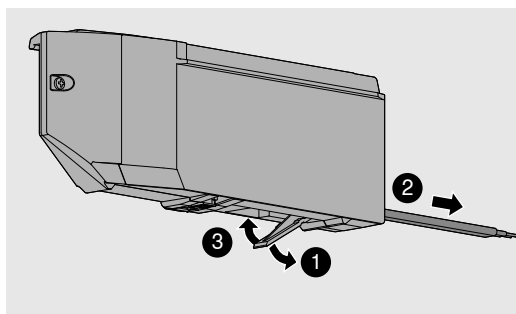




Distribution cable

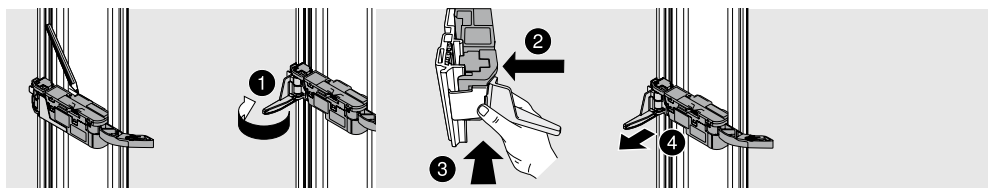


AVENTOS HK top

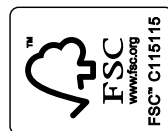


LEGRABOX/TANDEMBOX/MOVENTO/TANDEM

Drive unit removal



Look for our
FSC™-certified
products



MA-502/3 · 05.21 · © Copyright by Blum

Julius Blum GmbH
Furniture Fittings Mfg.
6973 Höchst, Austria
Tel.: +43 5578 705-0
Fax: +43 5578 705-44
E-mail: info@blum.com
www.blum.com

Our sites in Austria, Poland and China are certified
to the international standards mentioned below.
Our site in the USA is certified to ISO 9001.
Our site in Brazil is certified to ISO 9001 and ISO 14001.



ISO 9001
Certified Quality
System



ISO 14001
Certified Environmental
System



ISO 50001
Certified Energy
System

