

Solutions for Thin Fronts

Attachment system available for doors,
lift systems and drawers

blum.com

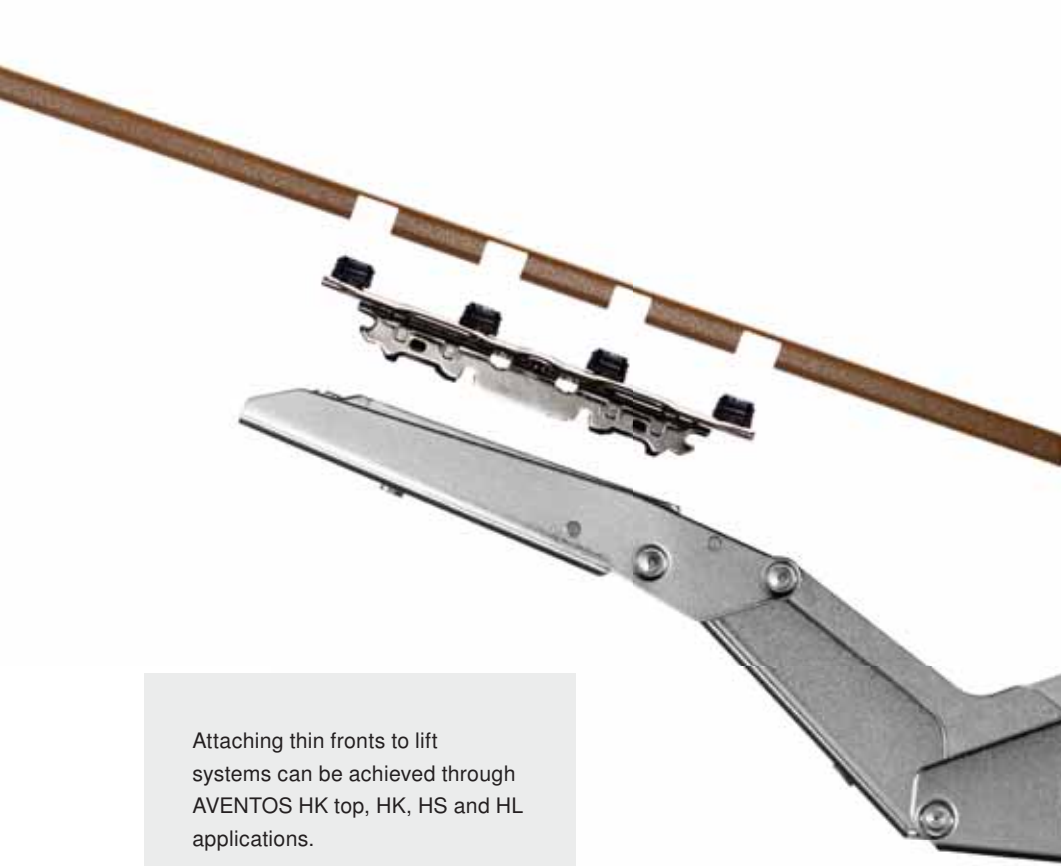
 **blum**[®]

Available in Three Applications


Sometimes, mixing materials and textures is the magic that brings a design to life. Now, you can give cabinets unexpected flavor with thin materials for fronts. Available in three applications, you can make a statement by accenting or implementing thin fronts for an entire kitchen.



The revolutionary design for CLIP top BLUMOTION for thin doors was reimagined from the inside out. Our soft close technology has been integrated into the hinge, eliminating the need for a hinge cup. With a 110° opening angle and zero protrusion, this solution can work for a variety of applications.



Attaching thin fronts to lift systems can be achieved through AVENTOS HK top, HK, HS and HL applications.



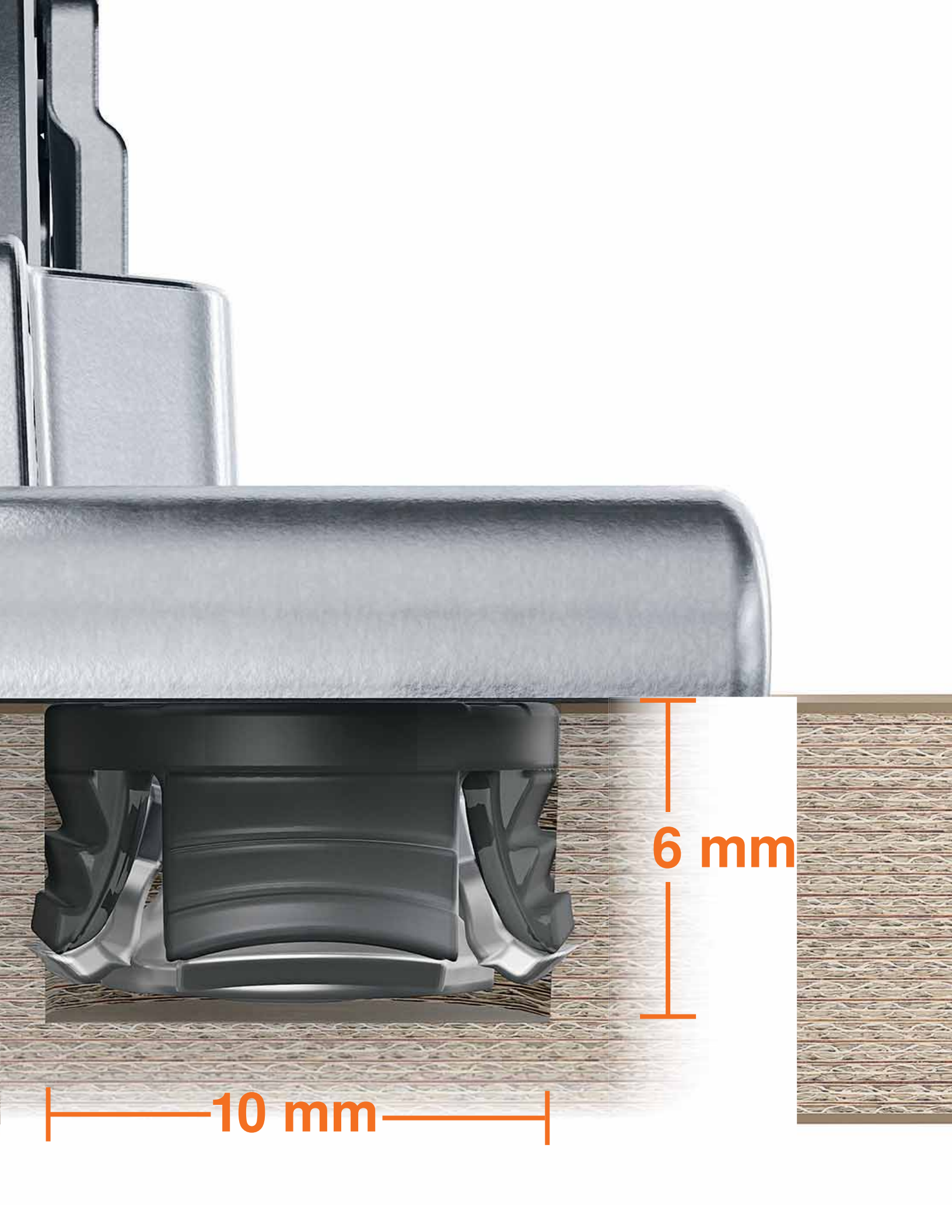
The slim design of LEGRABOX can now be mirrored in the drawer front. Using the same installation pattern, LEGRABOX with thin fronts takes very little time to assemble.



An Easily Assembled System

Our new attachment system for thin fronts is based on EXPANDO T technology. A steel pull-in anchor ensures a secure fit for harder materials, while plastic jaws secure the fit for softer materials. Assembly is simple — drill, insert and secure the screws. With sufficient stability and strength, front materials of 8-14 mm may be used.

 **blum**

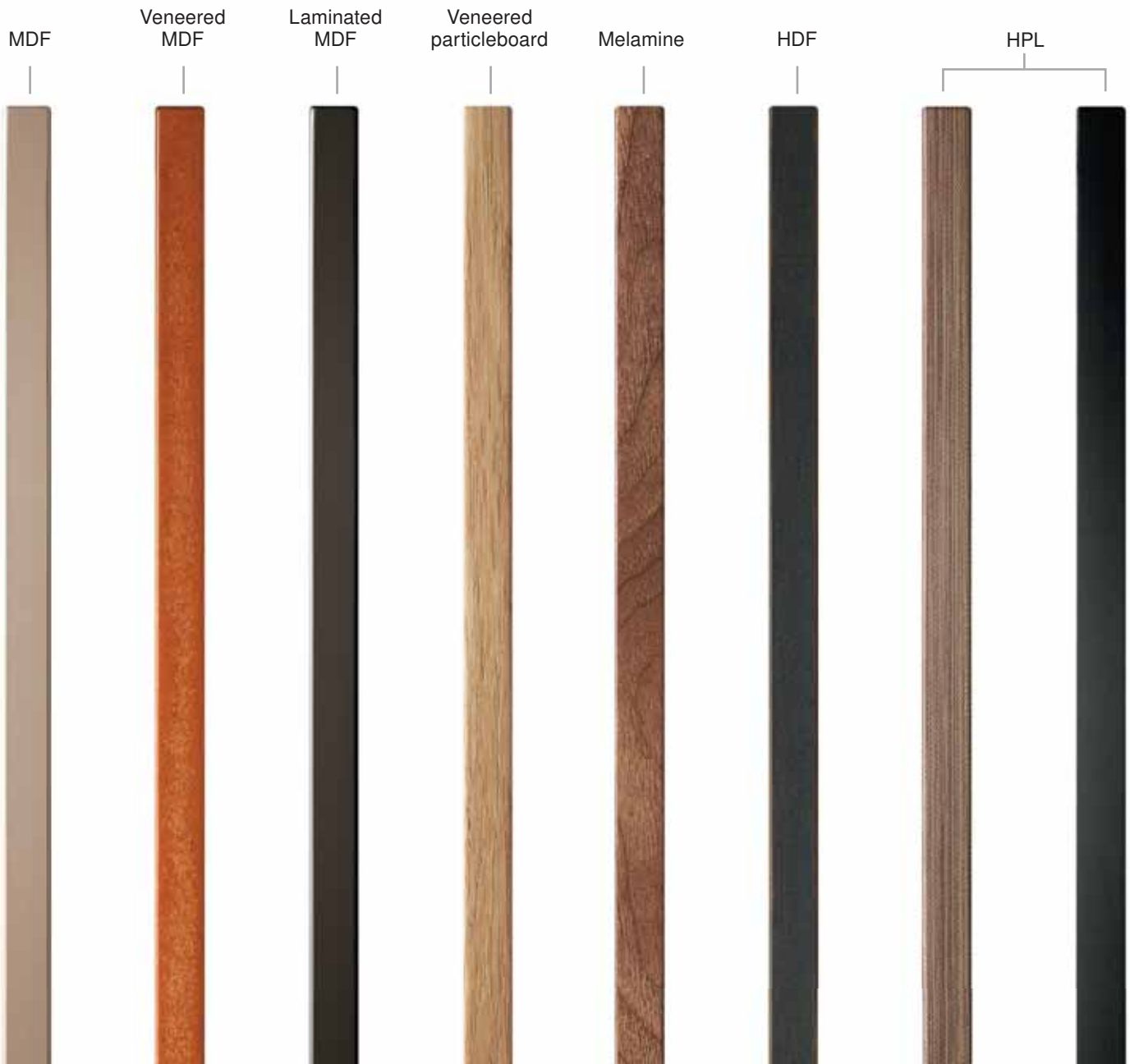


6 mm

10 mm

Easily Combine Materials

The only limit for cabinet materials is your imagination with Blum's thin door technology. Suitable for fronts from 8-14 mm, the thin door attachment is strong enough for heavier stones while still being suitable for softer materials. Bring your ideas to life using a wide range of materials.



Solid surface



Mineral composite



Concrete



Quartz composite



Natural stone



Cement fiberboard



Ceramic



Solutions for thin fronts



Order Specification


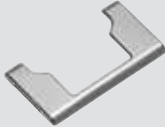


- 110° opening angle
- Integrated BLUMOTION available
- Deactivation for small/light doors available
- Zero protrusion
- Overload safety feature
- Compatible with existing CLIP mounting plates
- Angle restriction clips available (85°/92°)
- Hinge arm and cup cover caps available

Hinge Systems

Hinges for thin doors		
	Hinges	Part no.
	CLIP top BLUMOTION (Soft close)	71B453T
	CLIP top (Self close)	71T453T
	CLIP top (Free swing)	70T453T.TL
For planning information see hinge brochure		

Accessories

Hinge arm cover cap		Hinge cup cover cap	
	Part no.		Part no.
	70.4503		70T4504

Area of application

Blum's thin front solution is suitable for attaching Blum hardware to thin front materials in cabinet manufacturing. With sufficient stability and strength, front materials of **8-14** (5/16" - 9/16") may be used.

Disclaimer of liability

Blum accepts no liability for the use of the thin front attachment system in combination with materials not listed or hardware from other manufacturers. It is recommended that the assembly be carried out by an experienced cabinet manufacturer.

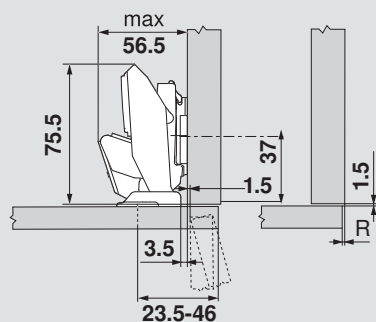
Angle restriction clips

85° (Dark gray)	92° (Dust gray)
	
Part no.	Part no.
70T4503	70T4503.09

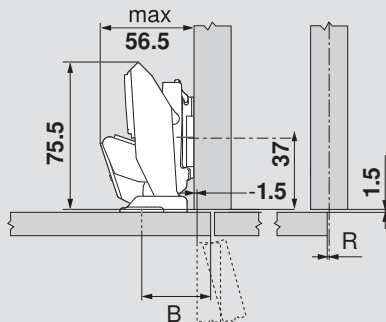
Area of application and assembly recommendations

Materials tested by Blum	Min. tightening torque (Nm)
Particleboard (transverse tensile strength > 0.4 N/mm ²)	1.5
MDF (transverse tensile strength > 0.6 N/mm ²)	1.5
HDF	2
HPL	2
Mineral composites	2
Granite stone	3
Quartz composite artificial stone	3
Ceramic plates	3

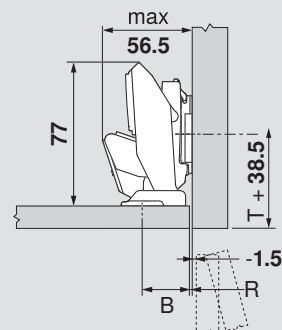
Overlay



Partial/twin overlay



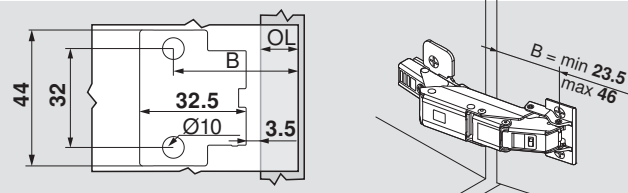
Inset



H	Overlay																			P	S
0	1	2	3	4	5	6	7	8	9	10	11	12	13	14	15	16	17	18	19	-1.5	56.5
	28	29	30	31	32	33	34	35	36	37	38	39	40	41	42	43	44	45	46	Fixed distance = 27	
	B = Boring distance																				

H	Inset reveal							P	S
0	3.5	3	2.5	2	1.5	1	0.5	-1.5	56.5
	23.5	24	24.5	25	25.5	26	26.5	Fixed distance = 27	
B = Boring distance									

Attachment position/boring pattern

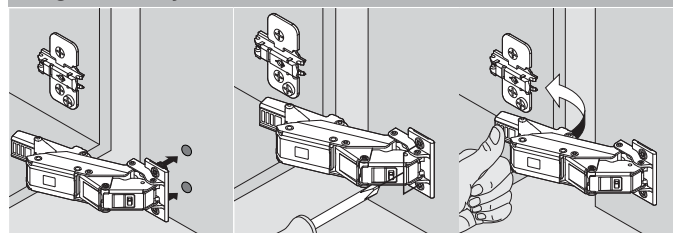


B = Boring distance

OL = Overlay

B = OL + 27 (Fixed distance)

Hinge assembly



Adjustments

Height adjustment	Side adjustment	Depth adjustment
± 2.0	± 2.0	+ 3.0 - 2.0

Solutions for thin fronts



Order Specification

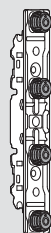


- Pre-mounted attachment system
- For thin fronts measuring **8-14 mm** (5/16" - 9/16")
- For various front materials
- Available for 3 different systems (AVENTOS, LEGRABOX and Hinges)



Lift Systems

AVENTOS arm assembly mounting plate



Part no.

For HK top, HK, HS and HL

20S42T1

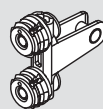
For planning information, see AVENTOS brochure.

NOTE: For boring depth information, see previous page.



Box Systems

LEGRABOX front fixing brackets



Heights

Part no.

N 2x **ZF7N70T2**

M 2x **ZF7M70T2**

K 2x **ZF7K70T2**

C 2x **ZF7C70T2**

For planning information, see LEGRABOX brochure.

NOTE: For boring depth information, see previous page.

LEGRABOX front stabilization bracket

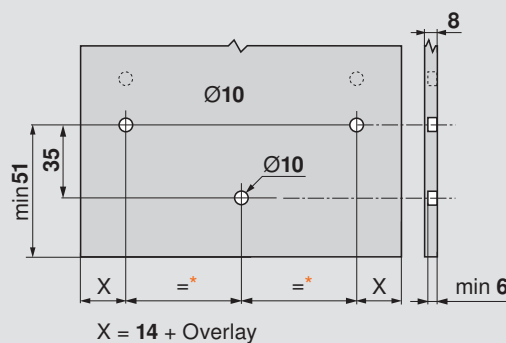
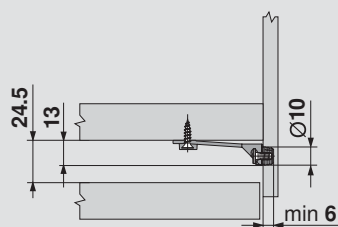


From cabinet widths of **601**, 1 piece
From cabinet widths of **901**, 2 pieces
From front heights of **381**, 1 piece

Part no.

Z96.00T1

Space requirement/boring pattern for LEGRABOX front stabilization bracket



* min. 80

Order Specification

Solutions for thin fronts



EXPANDO T



	Part no.
Dowel	70T4532T
Installation screw	M4x8MM

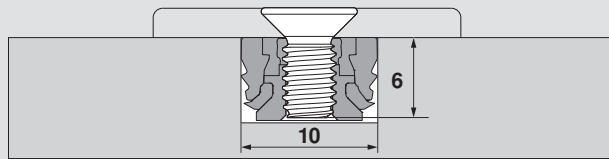
Machine drill bits



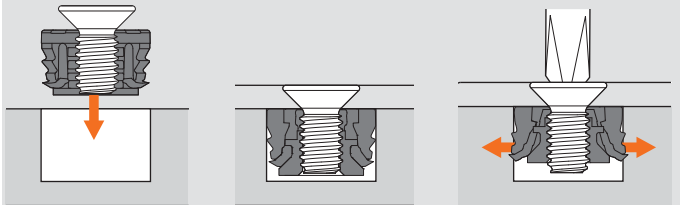
	Part no.
Ø10 mm drill bit (right handed)	M01.ZB10.02 R
Ø10 mm drill bit (left handed)	M01.ZB10.03 L

NOTE: Machine drill bits need to be set to 57 mm in length to achieve proper bore depth.

Boring dimensions



Dowel assembly



Connect With Us on Social Media

Be sure to connect with us on social media for additional resources for information regarding tips on installation, maximizing storage space, new products and other news and events going on inside Blum.

Find us by searching "**Blum Inc**" in the search bar.



Please visit blum.com for information on other Blum products
LIT.EXP1000.06.19 Ident. 26383800 © 2019 Blum, Inc.

Blum, Inc.
7733 Old Plank Rd.
Stanley, NC 28164
800-438-6788
blum.com



ISO 9001
Certified Quality
System

