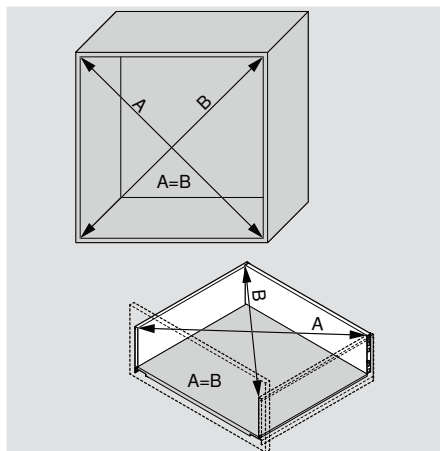
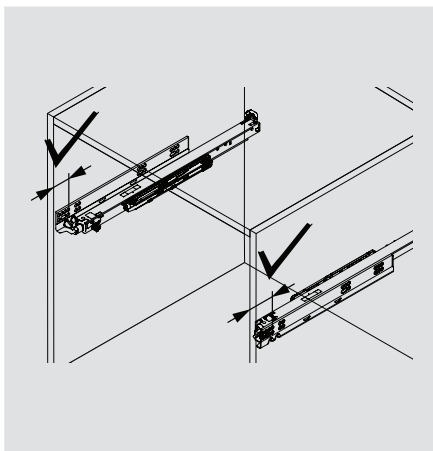


In order for you as a manufacturer, and your customers as future users, to enjoy long-term use of drawers with TIP-ON BLUMOTION, we ask you to please consider the following points during the manufacturing, assembly, and transportation of this product.

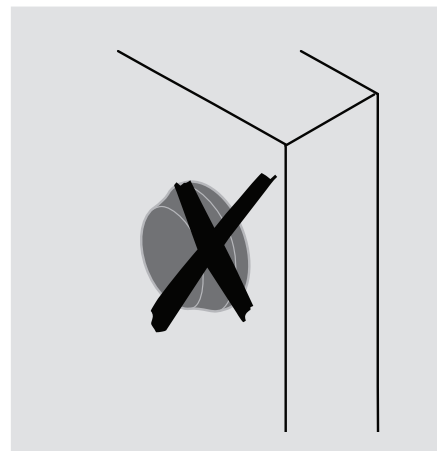
Cabinet Construction



To ensure optimal function with a minimum front gap of **3.5 mm**, precise manufacturing is required. Please adhere to our specifications and verify that cabinets and drawers are square.

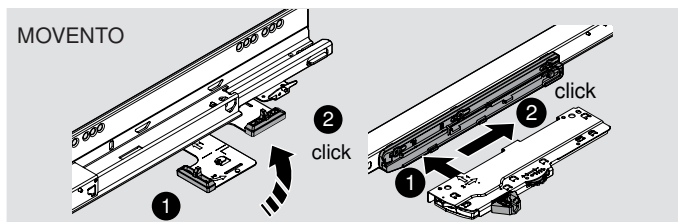


Verify exact depth position of both concealed runners.

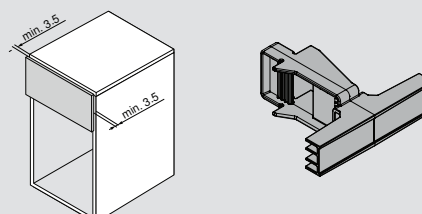


Do not use bumpers, as this can inhibit the function of TIP-ON BLUMOTION when the drawer front is pressed.

Assembly and Adjustment

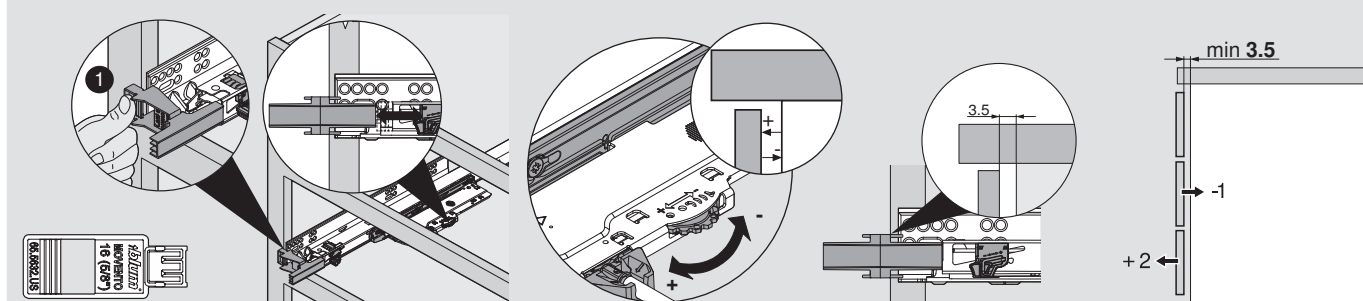


Engage TIP-ON BLUMOTION components until there is an audible clicking sound.



The front gap should be adjusted identically on each side to a minimum of **3.5 mm**.

Depth adjustment with optional TIP-ON BLUMOTION



NOTE: Using the 65.5632.US front gap template is highly recommended. Adjust left and right runner.

NOTE: If using 15/32" or 1/2" drawer thickness without T59.K010M, **13** (1/2") text should be visible instead.

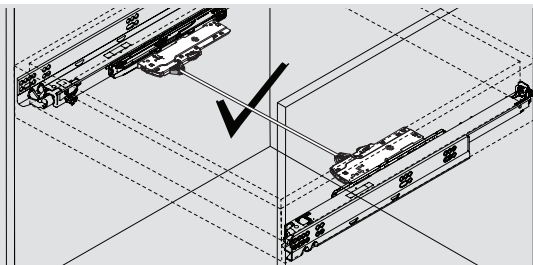
Manufacturer Tips for TIP-ON BLUMOTION

MOVENTO

blum

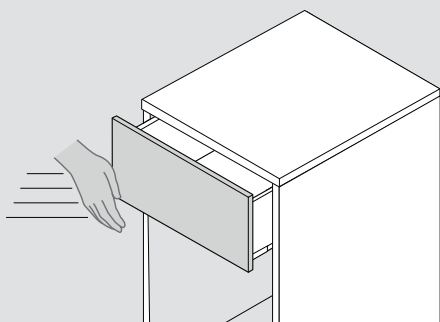


Please refer to our literature to select the correct TIP-ON BLUMOTION unit for your application. To identify a unit, look for the arrow imprinted on the nylon as shown above.

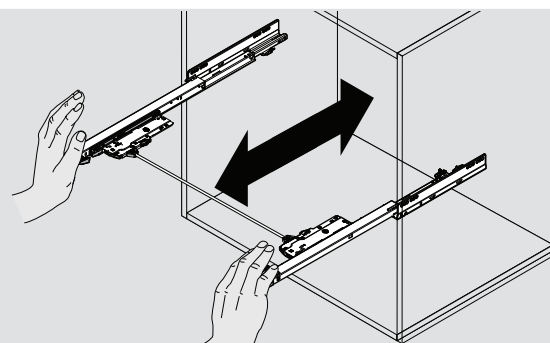


To achieve the optimal trigger range for TIP-ON BLUMOTION, use a synchronization rod with synchronization adapters.

Operation



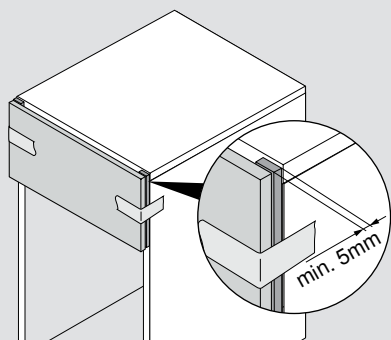
To tension TIP-ON springs, always close drawers with TIP-ON BLUMOTION using adequate force. Reduce the amount of force used accordingly for loaded drawers.



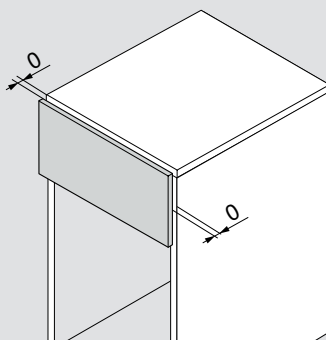
In order to prevent damage to the synchronization adapters, open or close concealed runners in parallel with one another once the synchronization components have been installed.

Transportation

To prevent damage to pre-assembled furniture during transportation:

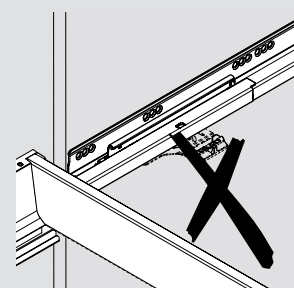


A) clamp a spacer between front and cabinet or



B) adjust the front gap to 0 mm or

NOTE: Front gap will have to be readjusted during installation.



C) transport without latch



You can find further information on
TIP-ON BLUMOTION assembly at:
> www.blum.com/documents/tiponblumotion